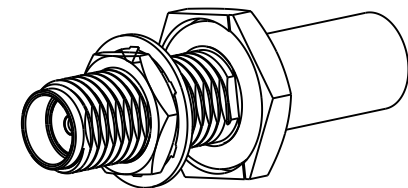
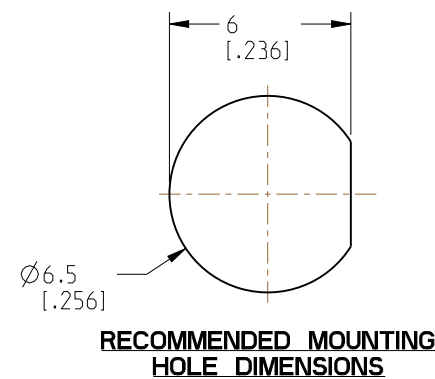
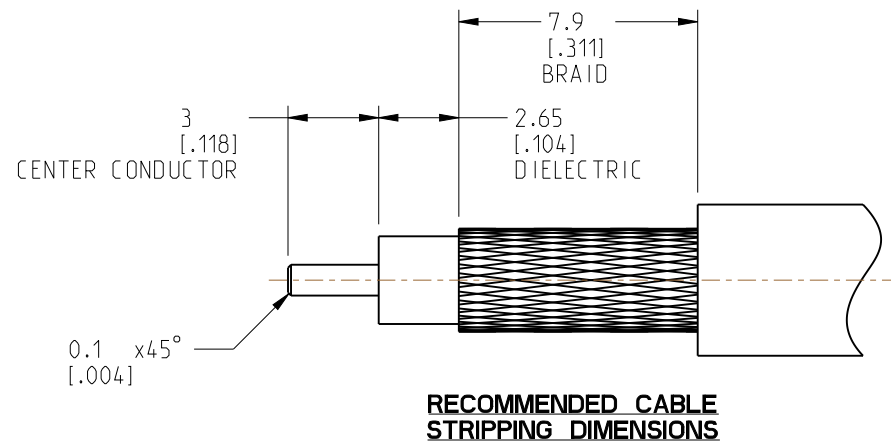
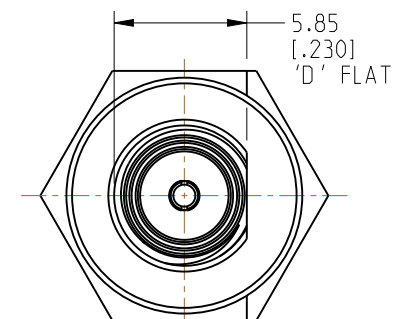
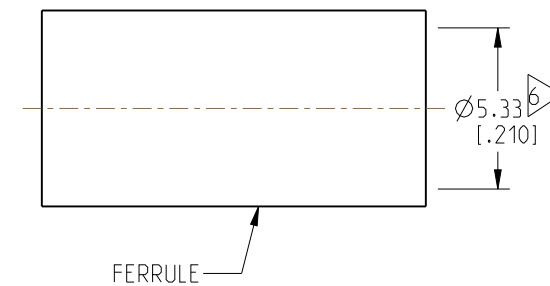
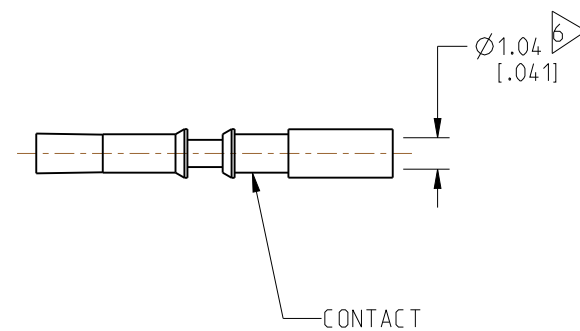
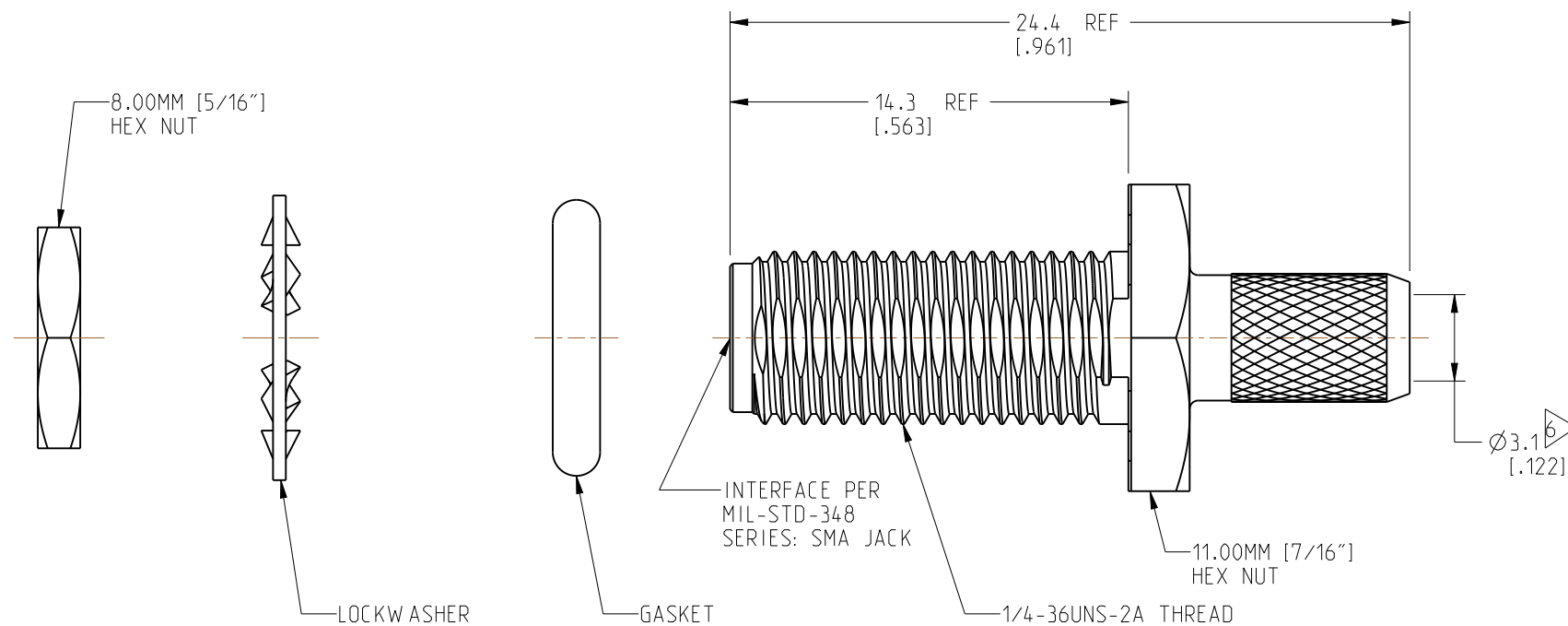


1. MATERIALS AND FINISHES:
BODY - BRASS, NICKEL PLATING
HEX NUT & LOCKWASHER - STAINLESS STEEL, PASSIVATED
CONTACT - BeCu, GOLD PLATING
INSULATOR - PTFE, NATURAL
FERRULE - COPPER, NICKEL PLATING
GASKET & O-RING - SILICONE RUBBER, RED
2. ELECTRICAL:
A. IMPEDANCE: 50 OHMS
B. FREQUENCY RANGE: DC - 6 GHz
C. VSWR(RETURN LOSS): 1.30 MAX. @ DC - 6 GHz
D. DIELECTRIC WITHSTANDING VOLTAGE: 1000 VRMS, MIN.
3. MECHANICAL:
A. DURABILITY: 500 CYCLES MIN.
B. TEMPERATURE RANGE: -65°C TO +165°C
C. SEALING: MEETS IP-67 REQUIREMENTS IN UNMATED CONDITION
4. PACKAGING:
A. QUANTITY: SINGLE PACK
B. MARKING: PACKAGING TO BE MARKED
"AMPHENOL RF, 901-10746 & DATE CODE"

6. CABLE ENTRY DIMENSIONS.



SCALE 2.000



PRELIMINARY ISSUE

CUSTOMER OUTLINE DRAWING

NOTICE: These drawings, specifications, or other data (1) are, and remain the property of Amphenol corp (2) must be returned upon request; and (3) are confidential and not to be disclosed to any person other than those to whom they are given by Amphenol Corp. The furnishing of these drawings, specifications, or other data by Amphenol Corp., or to any other person to anyone for any purpose is not to be regarded by implication or otherwise in any manner licensing, granting rights to permitting such holder or any other person to manufacture, use or sell any product, process or design, patented or otherwise, that may in any way be related to or disclosed by said drawings, specifications, or other data.

UNLESS OTHERWISE SPECIFIED
DIMENSIONS ARE METRIC (INCHES) AND TOLERANCES ARE:

<0.5mm = ±0.05mm	[<0.020 = ±0.002]
>0.5 - 6mm = ±0.1mm	[>0.020 - 0.236 = ±0.004]
>6.00 - 30mm = ±0.2mm	[>0.236 - 1.181 = ±0.008]
>30.00 - 120mm = ±0.3mm	[>1.181 - 4.725 = ±0.012]

MATERIAL	SEE NOTES
----------	-----------

TITLE
SMA BHD JACK IP67 FOR RG-58 CABLE

Amphenol RF

SIZE B	DRAWING NO.	901-10746
	ITEM NO.	901-10746
	PART NO.	901-10746

REV
1

THIRD ANGLE PROJ. 

REFERENCE
901-10698-X

EAR#	10071
------	-------

 ANGLES = $\pm 1^\circ$

ENGINEER
S.VO

DATE
29-SEP-20

SHEET NO. 2 OF 2

SCALE: 4.0:1.0

5

4

3

2

1