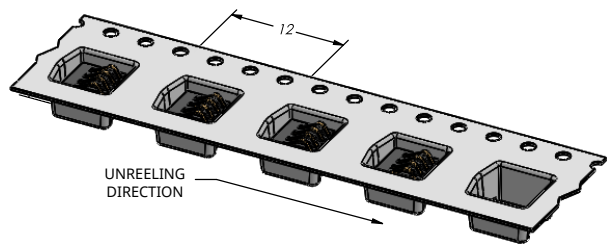
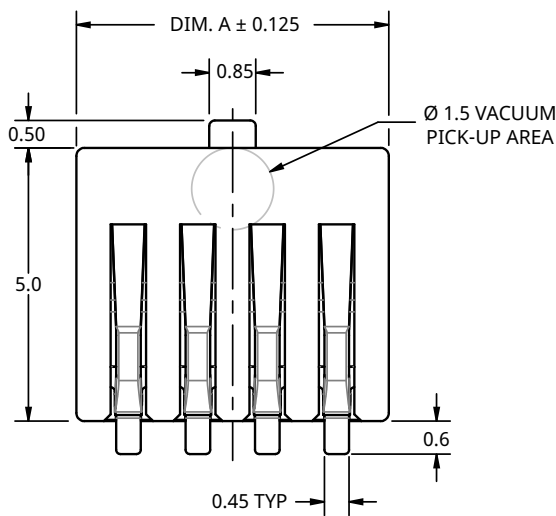
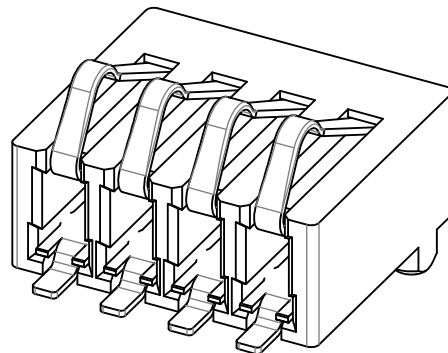
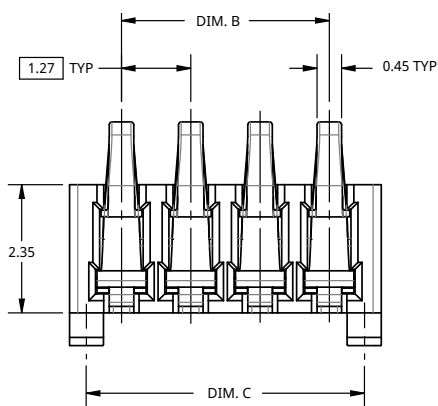


# Battery Connector 1.27mm Pitch

## 9155-020



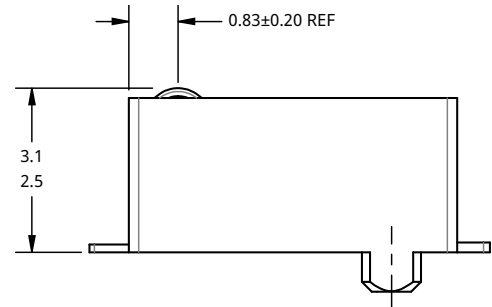
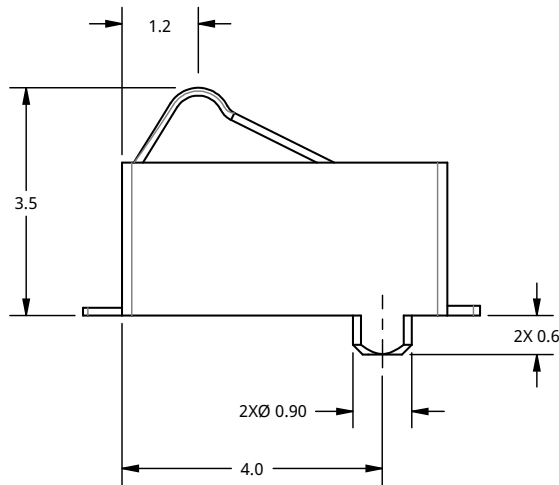
PACKAGING PER EIA-481  
1,100 PARTS PER 330 mm REEL



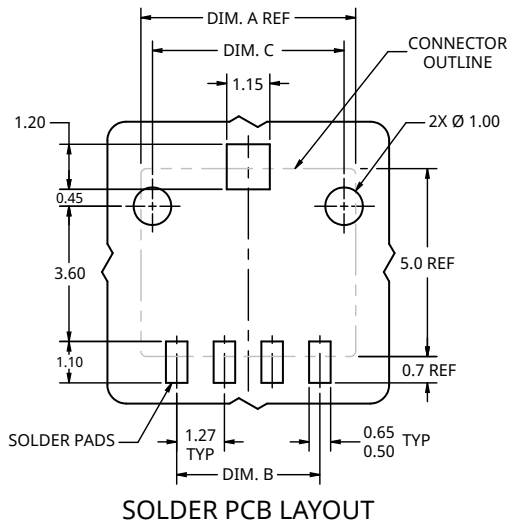
| Part Number         | POS. | DIM. A | DIM. B | DIM. C |
|---------------------|------|--------|--------|--------|
| 00-9155-002-021-016 | 2    | 3.175  | 1.27   | 2.56   |
| 00-9155-003-021-016 | 3    | 4.445  | 2.54   | 3.83   |
| 00-9155-004-021-016 | 4    | 5.715  | 3.81   | 5.10   |
| 00-9155-005-021-016 | 5    | 6.985  | 5.08   | 6.37   |

# Battery Connector 1.27mm Pitch

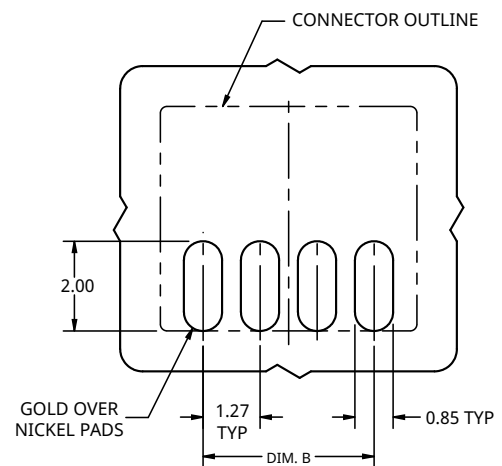
## 9155-020



WORKING RANGE  
SEE NOTE 5



SOLDER PCB LAYOUT



MATING PCB LAYOUT

### NOTES:

- HOUSING MATERIAL: GLASS-FILLED THERMOPLASTIC FLAME RETARDANT PER UL94V-0; COLOR: BLACK
- CONTACT MATERIAL: BERYLLIUM COPPER
- PLATING: 0.8 µm MIN DUCTILE NICKEL UNDERPLATE ALL OVER; 0.75 µm MIN HARD GOLD IN CONTACT AREA; 1.5 - 3.0 µm LEAD-FREE MATTE TIN ON TAILS
- SOLDER TAB: TIN-PLATED COPPER ALLOY
- NORMAL FORCE WORKING RANGE: 0.30 TO 0.55 N