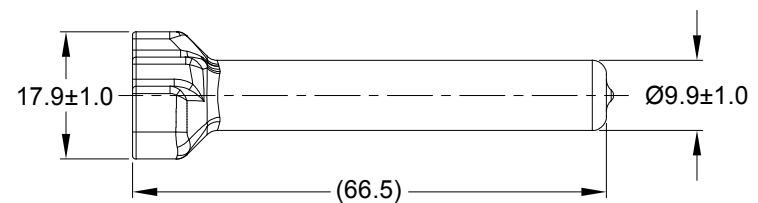
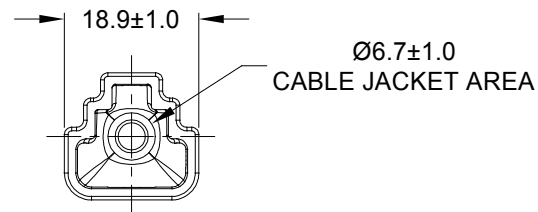
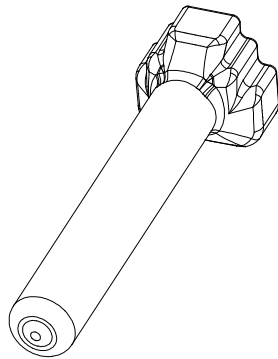



REVISIONS					
REV	ECO	DESCRIPTION	DATE	BY	APPR
A1	-	RELEASE NUMBER	13MAR20	BROOK	TOMMY



PART NUMBER CHART	
COLOR	PART NUMBER
GREY	ATM3S-BT
BLACK	ATM3S-BT-BK
YELLOW	ATM3S-BT-YW

NOTES: UNLESS OTHERWISE SPECIFIED

- THIS PART IS USED ON ATM06-3S PLUG WITH ANY MODIFICTION THAT DOES NOT INCLUDE AN END CAP.
- TEMPERATURE RATING : -29°C TO +100°C [-20°F TO +212°F]
- ALL DIMENSIONS ARE FOR REFERENCE USE ONLY.

	SEE PART NUMBER CHART		REF : DTM3S-BT, DTM3S-BT-BK, DTM3S-BT-YW			
	PART NUMBER		DESCRIPTION			ITEM
QUANTITY	MATERIALS LIST					
UNLESS OTHERWISE SPECIFIED		SIGNATURES		DATE		<div>Amphenol</div> <div>Sine Systems - www.amphenol-sine.com 44724 Morley Drive Clinton Township, MI 48036</div>
1) All dimensions are in metric(mm).		DRAWN: BROOK.DING		13MAR20		
2) Tolerances are as follows:		CHECKED: ORION.LI		16MAR20		
1 PL DEC ±0.30 2 PL DEC ±0.15 3 PL DEC ±0.08		ENGINEER:				
3) Note reference = 		APPROVAL: TOMMY.XIE		17MAR20		
MATERIAL SPECIFICATIONS:		CUSTOMER:		<div>BOOT, ATM, 3 WAY, PLUG</div>		
PVC						
PROCESS SPECIFICATIONS:		THIS DRAWING IS SUPPLIED FOR INFORMATION ONLY. DESIGN FEATURES, SPECIFICATIONS AND PERFORMANCE DATA SHOWN HEREON ARE THE PROPERTY OF THE AMPHENOL CORPORATION. NO RIGHTS OF REPRODUCTION ARE IMPLIED. ALL DIMENSIONS ARE SUBJECT TO NORMAL MANUFACTURING VARIATIONS.				
NEXT ASSY:		SIZE	TYPE	DWG NO:		REVISION
		A	C-	ATM3S-BT-XX		A1
		SCALE: NONE		SHEET 1 OF 1		