



SERIES 19

RAISING THE BAR
MP - COUNT ON IT

High Amperage 25 to 200 AMP

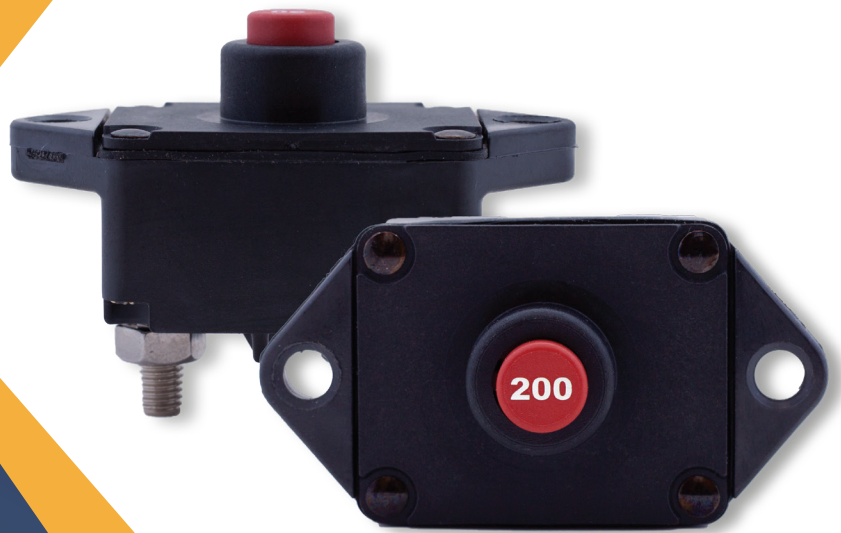
Type I & III Vehicle Protection

IP67 & IP69K Waterproof

SAE & ABYC Compliant

Ignition-Protected

LED *TripID*™ Option



SUPERIOR CIRCUIT PROTECTION

www.mechprod.com

Series 19 Overview

FEATURES:

Wider Amperage Range - 25 to 200 Amp
Smallest available breaker to 200 Amp
Superior Ingress Protection - IP67 & IP69K
Designed for Harsh Applications to 30VDC
LED *tripID*™ for open circuits
Recognized per UL1077
Type I and Type III manual reset



Series 19 Specifications

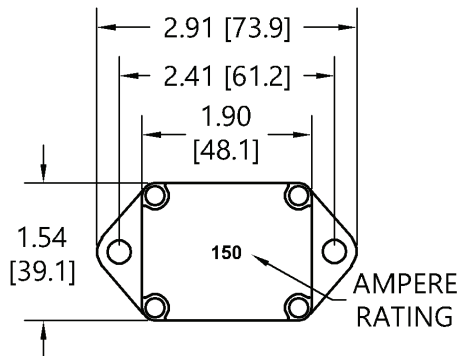
Standard Amp Ratings	25, 30, 35, 40, 45, 50, 60, 70, 80, 90, 100, 105, 120, 135, 150, 175, and 200 Amps
Maximum Voltage Ratings	30VDC
Ultimate Trip	Must hold 100% at 25°C / 77°F, Must trip at 135% within 1 hour
Dielectric Strength	1500VAC Minimum
Interrupt Capacity (25 - 150A)	2,500A @ 14VDC (Type III) 1,500A @ 28VDC (Type III) 2,500A @ 30VDC (Type I)
Interrupt Capacity (175 - 200A)	2,500A @ 30VDC (Type I and Type III)
Endurance (25 - 150A)	14VDC @ 100 cycles, 6X rating (Type I and Type III) 28VDC @ 100 cycles, 2X rating (Type III) 30VDC @ 100 cycles, 2X rating (Type I)
Endurance (175 - 200A)	14VDC @ 100 cycles, 6X rating (Type I) 14VDC @ 100 cycles, 2X rating (Type III) 28VDC @ 50 cycles, 2X rating (Type III) 30VDC @ 100 cycles, 2X rating (Type I)
Operating Temperature Range	-40°C / -40°F to 85°C / 185°F
Torque Rating	Mounting: #10-32 screws (for attached nut), 25 in-lbs max. 1/4" bolts (for 0.27" mtg holes), 50 in-lbs max. Terminals: 1/4"-28 studs, 50 in-lbs max.
Weight	Panel Mount: 2.6 oz. (74 gm.) Panel Mount w/Plate: 5.0 oz. (140 gm.)
Ignition Protected	Compliant to SAE J1171
Ingress Protection	IP67 - Dust and waterproof rated. IP69K - High temperature an pressure spray
Corrosion	Conforms to Mil-STD-202, Method 101, Test Condition A, for 96 hours under a 5% salt spray
Humidity	Conforms to Mil-STD-202, Method 106, for 240 hours at 95% RH
Shock	Rated to withstand 100g per Mil-STD-202, Method 213, Test Condition A.
Vibration	Rated to withstand 10g per Mil-STD-204, Test Condition A.
Regulatory Compliance Summary	Interrupt Capacity: SAE J1625, ABYC-E11, UL1077* Ignition Protected: SAE J1171 Endurance: SAE J1625 Dielectric Strength: UL1077* Shock Vibration, Corrosion, Humidity: Mil-STD-202 Dust and Waterproof: IP67 High Temp & Pressure Spray: IP69K

*tested per UL1077 methods

Series 19 Physical Configuration

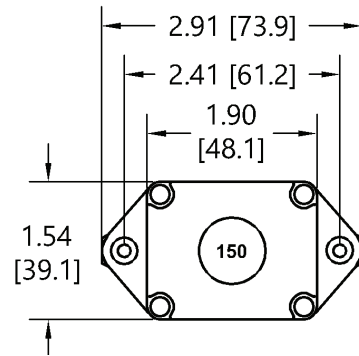
19A-P10

Type I Auto Reset
Panel Mount



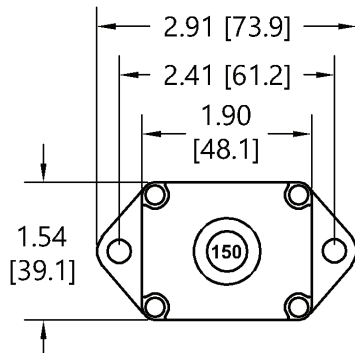
19A-P11

Type I Auto Reset Panel Mount
with LED tripIDtm and
attached mounting nuts



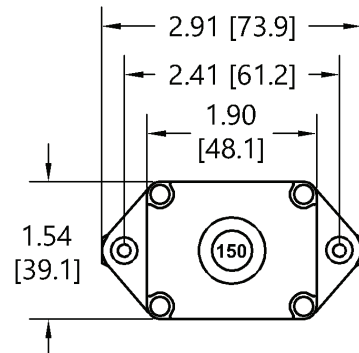
19M-P10

Type III Manual Reset
Panel Mount



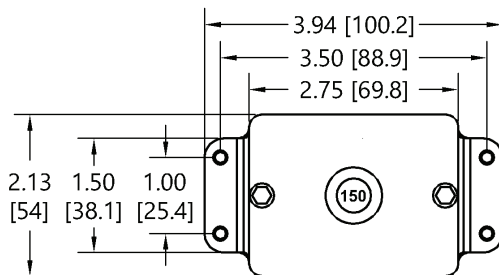
19M-P11

Type III Manual Reset Panel Mount
with attached mounting nuts

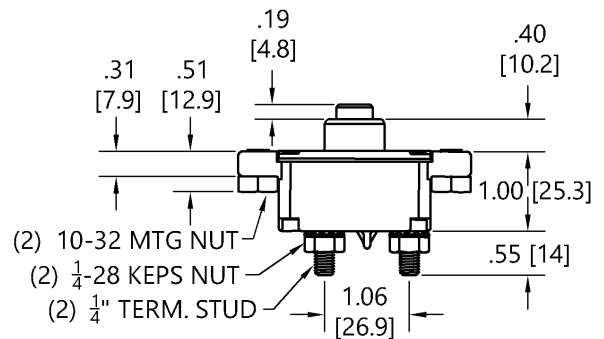


19M-P21

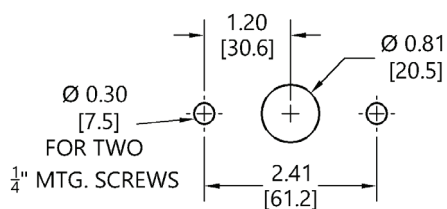
Type III Manual Reset Panel Mount
with wide mounting plate
and attached mounting nuts



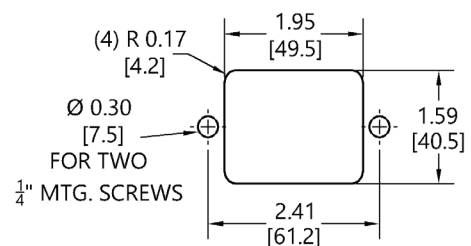
Type III Manual Reset - Side View

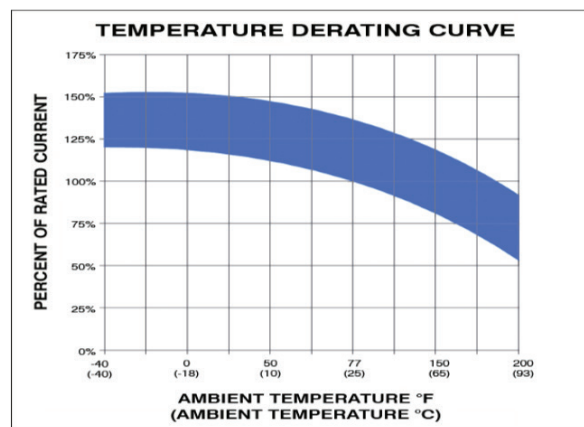
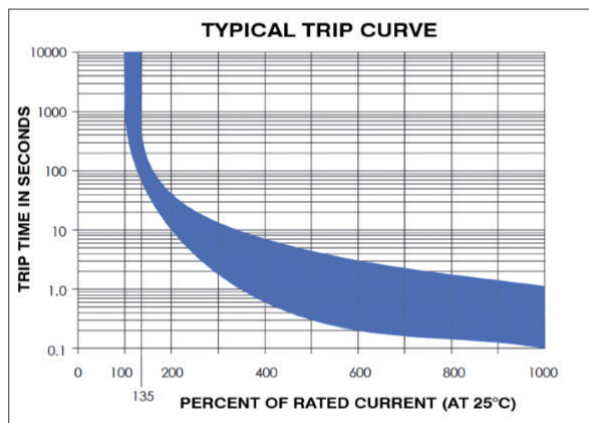


Rear Mount Panel Cutout Dimensions
without wide mounting plate



Front Mount Panel Cutout Dimensions
without wide mounting plate





Typical Overload Trip Time Data (in seconds)

Current Rating	200%	400%	600%	800 %	1000%
25-200 Amps	10-40	0.6-7.0	0.2-3.0	0.15- 2.0	0.09-1.2

Typical Ambient Temperature Correction Factor

Current Rating	°F	-40	0	50	77	150	200
	°C	-40	-18	10	25	65	93
25-200 Amps		0.80	0.84	0.87	1.00	1.22	1.47



Type I Auto Reset w/ LED *TripID*™
Shown: P/N 19A-P10-C-150-02

Series 19 Part Numbering Guide

