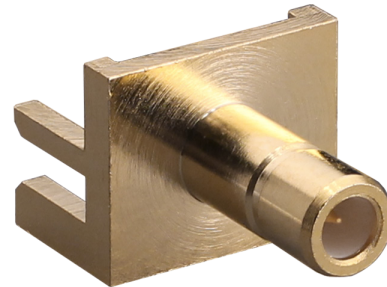


## CONSMB003.062-G SMB Jack PCB Edge Mount Connector

The CONSMB003.062-G is an SMB jack PCB surface-mount connector designed for reflow-solder mounting directly to a printed circuit board. Operating from 0 GHz to 6.5 GHz, the CONSMB003.062-G combines superior performance, compact size, and a convenient snap-on mating interface to provide a reliable, easy-to-use connector. Additionally, all Linx connectors meet RoHS lead free standards and are tested to meet requirements for corrosion resistance, vibration, mechanical and thermal shock.



### Features

- 0 to 6.5 GHz operation
- Gold plating
  - Superior corrosion resistance
- SMB jack (male pin) connection
  - Gold plated brass center contact
- Direct PCB attachment
- Reflow- or hand-solder assembly

### Applications

- LPWA
  - LoRaWAN®, Sigfox®, WiFi HaLow™ (802.11ah)
- Cellular IoT
  - LTE-M (Cat-M1), NB-IoT
- Cellular
  - 5G/4G LTE/3G/2G
- GNSS
  - GPS, Galileo, GLONASS, BeiDou, QZSS
- Industrial/Commercial/Enterprise
- ISM

**Table 1. Electrical Specifications**

Impedance	50 $\Omega$	
Frequency Range	0 to 6.5 GHz	
Voltage Rating	750 V RMS	
Contact Resistance	Center: $\leq 6.0$ m $\Omega$ Outer: $\leq 1.0$ m $\Omega$	
Select Frequencies	400 MHz to 960 MHz	2.4 GHz
Insertion Loss (dB max)	-0.12	-0.36
VSWR (max)	1.1	1.6

### Ordering Information

Part Number	Description
CONSMB003.062-G	SMB jack (male pin) PCB edge-mount connector

Available from Linx Technologies and select distributors and representatives.

## Product Dimensions

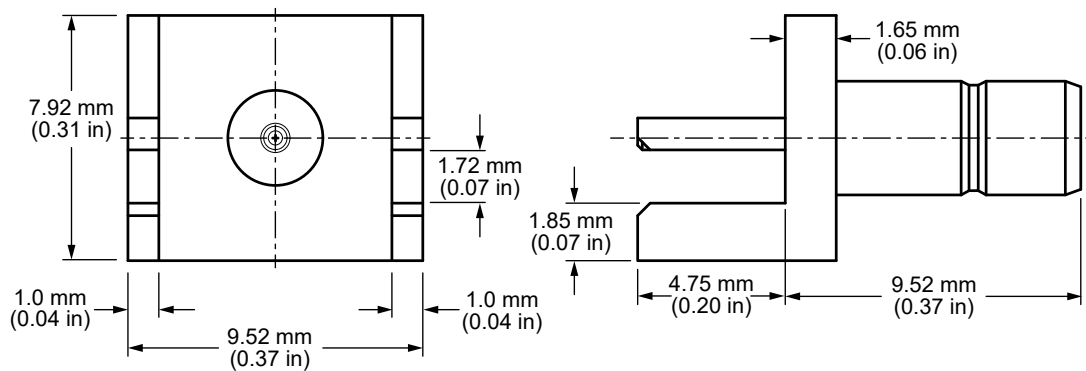


Figure 1. Product Dimensions for the CONSMB003.062-G Connector

Table 2. Connector Components

Model	CONSMB003.062-G	
Connector Part	Material	Finish
Connector Body	Brass	Gold
Center Contact (male pin)	Brass	Gold
Insulator	PTFE	—

## Recommended PCB Footprint

Figure 2 shows the connectors recommended PCB footprint and through hole sizes.

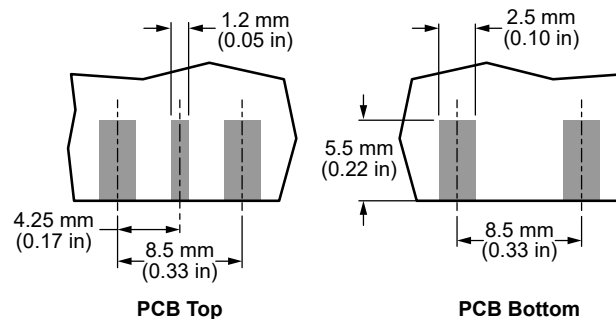


Figure 2. Recommended PCB Dimensions for the CONSMB003.062-G

## Connector Performance

Table 3 shows insertion loss and VSWR values for the CONSMB003.062-G connector at commonly used frequencies.

Insertion loss is the loss of signal power (gain) resulting from the insertion of a device in a transmission line. VSWR describes how efficiently power is transmitted through the connector. A lower VSWR value indicates better performance at a given frequency.

**Table 3. Insertion Loss and VSWR for the CONSMB003.062-G Connector**

Band	Low-Band Cellular/ ISM/LPWA	GNSS	Midband Cellular	WiFi/ISM
Frequency Range	400 MHz to 960 MHz	1164 MHz to 1609 MHz	1427 MHz to 5000 MHz	2.4 GHz
Insertion Loss (dB max)	-0.12	-0.20	-0.45	-0.36
VSWR (max)	1.1	1.2	1.7	1.6

**Table 4. Mechanical Specifications**

Model	CONSMB003.062-G
Mounting Type	PCB Edge-Mount
Fastening Type	Snap-on Coupling
Interface in Accordance with	MIL-STD-348A
Connector Durability	500 cycles min.
Weight	1.4 g (0.05 oz)

**Table 5. Environmental Specifications**

MIL-STD, Method, Test Condition	
Corrosion (Salt spray)	MIL-STD-202 Method 101 test condition B
Thermal Shock	MIL-STD-202 Method 107 test condition B
Vibration	MIL-STD-202 Method 204 test condition B
Mechanical Shock	MIL-STD-202 Method 213 test condition I
Temperature Range	-65 °C to +165 °C
Environmental Compliance	RoHS

## Reflow Solder Profile

Figure 3 shows the time and temperature data for reflow soldering the connector to a PCB.

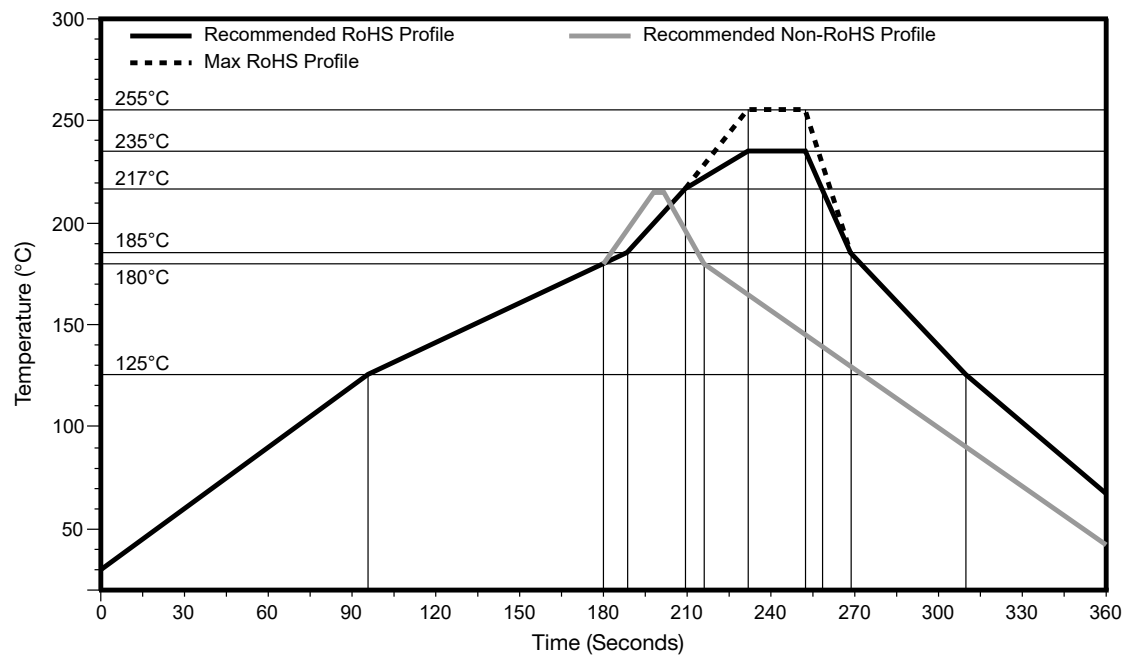


Figure 3. Recommended Reflow Solder Profile

## Packaging Information

The CON SMB003.062-G connector is placed in sealed trays of 100 pcs. Trays are packaged in cartons of 1700 pcs. Distribution channels may offer alternative packaging options.

### Connector & Adapter Definitions and Useful Formulas

**VSWR** - Voltage Standing Wave Ratio. VSWR is a unitless ratio that describes how efficiently power is transmitted through the connector. A lower VSWR value indicates better performance at a given frequency. VSWR is easily derived from Return Loss.

$$VSWR = \frac{10^{\left[\frac{\text{Return Loss}}{20}\right]} + 1}{10^{\left[\frac{\text{Return Loss}}{20}\right]} - 1}$$

**Insertion Loss** - The loss of signal power (gain) resulting from the insertion of a device in a transmission line. Insertion loss can be derived from the power transmitted to the load before the insertion of the component  $P_T$  and the power transmitted to the load after the insertion of the component  $P_R$ .

$$\text{Insertion Loss (dB)} = 10 \log_{10} \frac{P_T}{P_R}$$

---

**Website:** <http://linxtechnologies.com>  
**Linx Offices:** 159 Ort Lane, Merlin, OR, US 97532  
**Phone:** +1 (541) 471-6256  
**E-MAIL:** [info@linxtechnologies.com](mailto:info@linxtechnologies.com)

---

Linx Technologies reserves the right to make changes to the product(s) or information contained herein without notice. No liability is assumed as a result of their use or application. No rights under any patent accompany the sale of any such product(s) or information.

Wireless Made Simple is a registered trademark of Linx Acquisitions LLC. LoRaWAN is a registered trademark of Semtech Corporation. Sigfox is a registered trademark of SIGFOX. Other product and brand names may be trademarks or registered trademarks of their respective owners.

Copyright © 2020 Linx Technologies

All Rights Reserved

Doc# DS20339-133CON

