

# 92×92×25 mm

## San Ace 92WF 9WFA type US



### General Specifications

- Material ..... Frame: Plastic (Flammability: UL 94V-0), Impeller: Plastic (Flammability: UL 94V-0)
- Expected life ..... See the table below. (L10 life: 90% survival rate for continuous operation in free air at 60°C, rated voltage)  
Expected life at 40°C is for reference only.
- Motor protection function ..... Locked rotor burnout protection, Reverse polarity protection  
For details, please refer to p. 599.
- Dielectric strength ..... 50/60 Hz, 500 VAC, for 1 minute (between lead wire conductors and frame)
- Insulation resistance ..... 10 MΩ or more with a 500 VDC megger (between lead wire conductors and frame)
- Sound pressure level (SPL) ..... At 1 m away from the air inlet
- Storage temperature ..... -30 to +70°C (Non-condensing)
- Lead wire ..... ⊕Red ⊖Black (Sensor) Yellow
- Mass ..... 170 g

This fan can be used in environments with oil mist.\*

\* Environment where cutting oil creates oil mist. Conduct a product evaluation with the type of oil to be used.

### Specifications

The models listed below **have ribs and pulse sensors.**

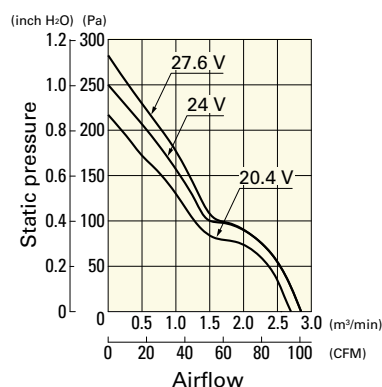
| Model no.     | Rated voltage<br>[V] | Operating voltage range<br>[V] | Rated current<br>[A] | Rated input<br>[W] | Rated speed<br>[min <sup>-1</sup> ] | Max. airflow<br>[m <sup>3</sup> /min] [CFM] | Max. static pressure<br>[Pa] [inchH <sub>2</sub> O] | SPL<br>[dB (A)] | Operating temperature<br>[°C] | Expected life<br>[h]       |
|---------------|----------------------|--------------------------------|----------------------|--------------------|-------------------------------------|---|---|-----------------|-------------------------------|----------------------------|
| 9WFA0924G4001 | 24                   | 20.4 to 27.6                   | 0.45                 | 10.8               | 7350                                | 2.85 100.6                                  | 250 1.0   | 56              | -20 to +70                    | 40000/60°C<br>(70000/40°C) |
| 9WFA0924H4001 |                      |                                | 0.28                 | 6.72               | 6100                                | 2.35 83.0                                   | 171 0.69  | 52              |                               |                            |

Note: Sensor and control options are available for selection. Refer to the table on p. 637.

### Airflow - Static Pressure Characteristics

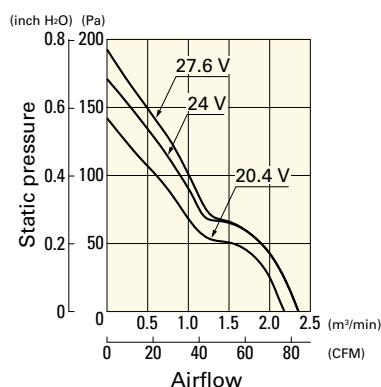
**9WFA0924G4001** With pulse sensor

Operating voltage range

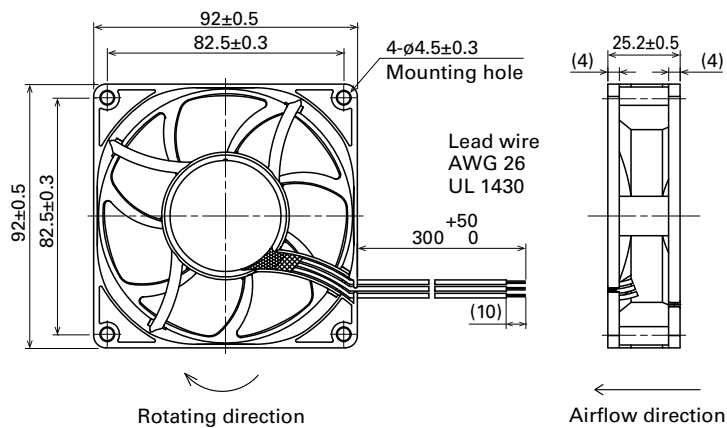


**9WFA0924H4001** With pulse sensor

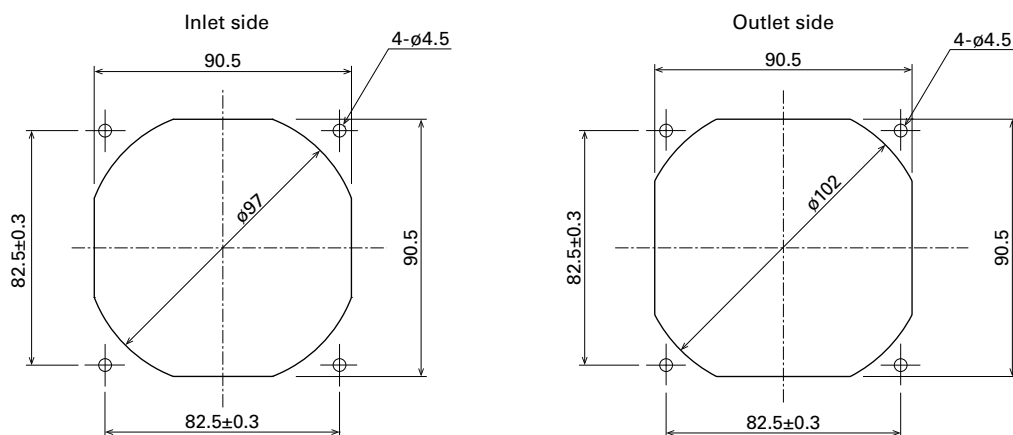
Operating voltage range



## Dimensions (unit: mm)



## Reference Dimensions of Mounting Holes and Vent Opening (unit: mm)



## Options

Finger guards

page: p. 584

Model no.: 109-099E, 109-099H, 109-099C