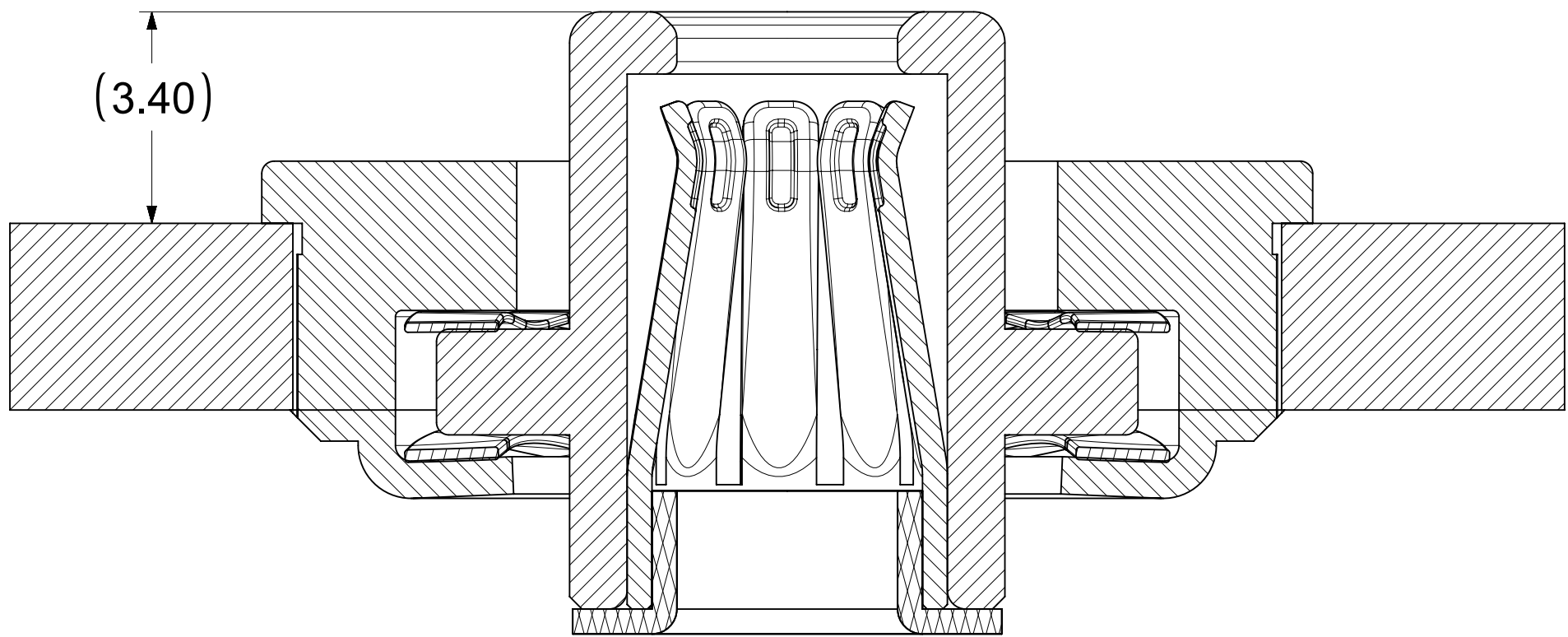
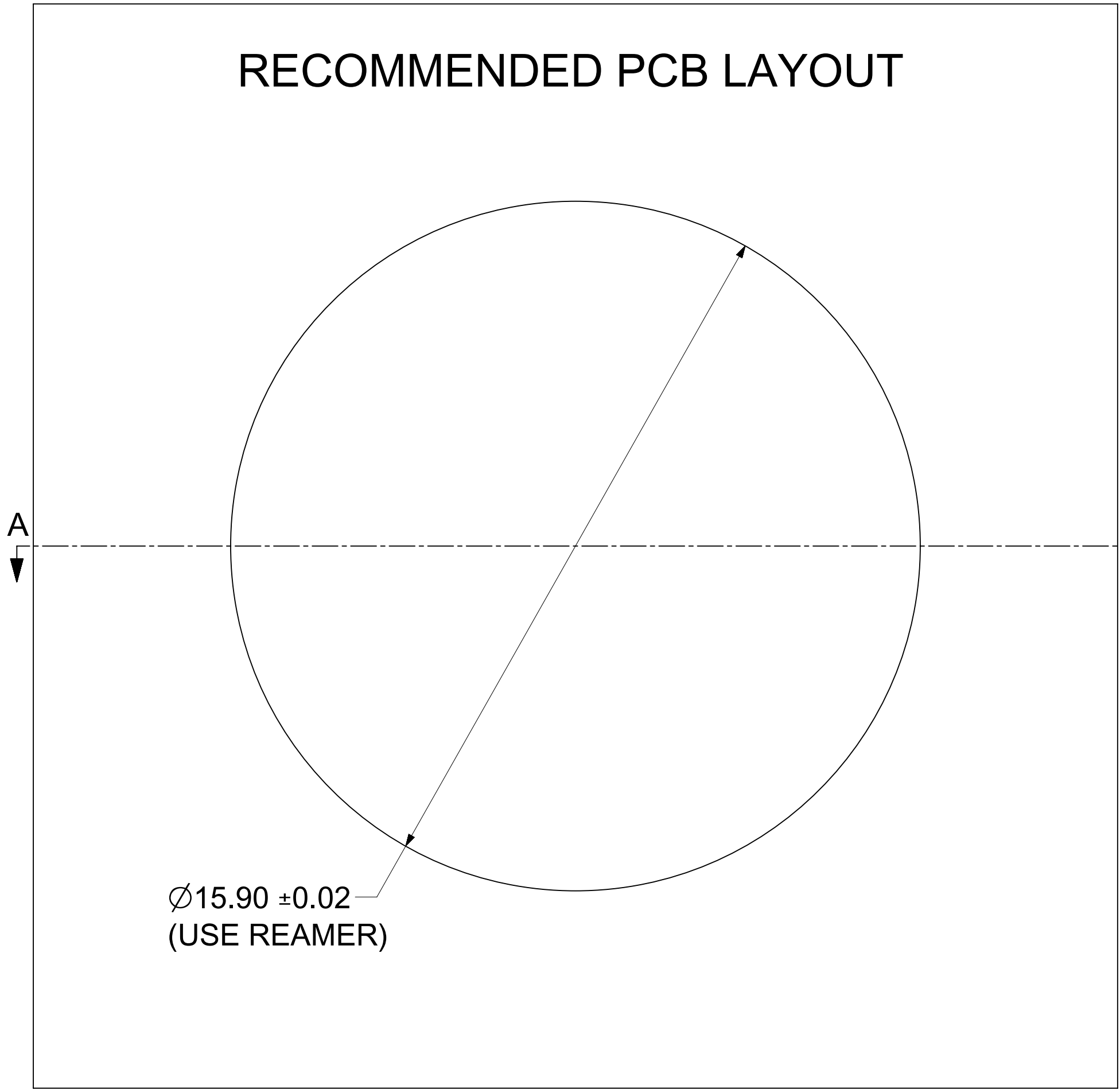


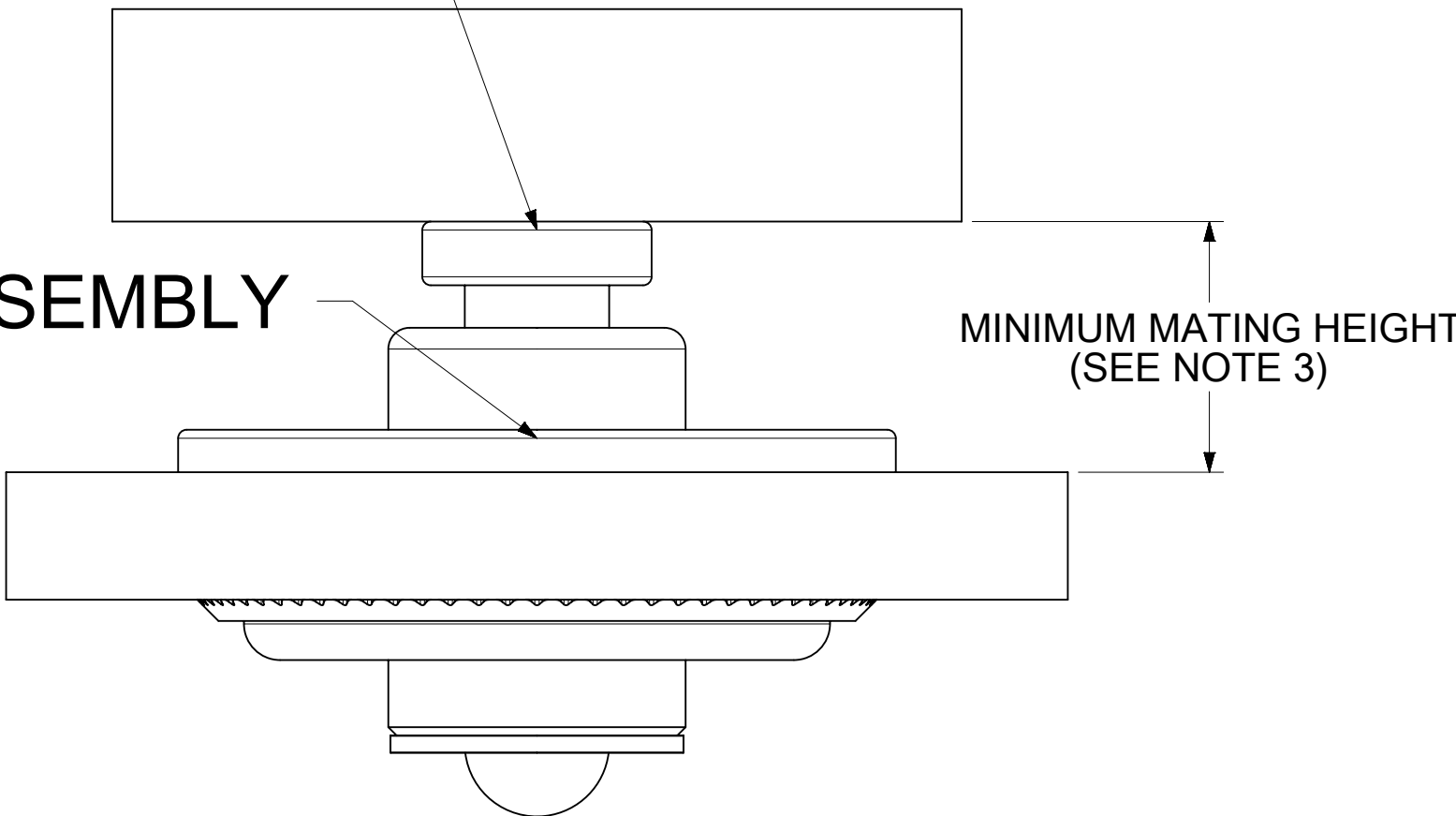
RECOMMENDED PCB LAYOUT



SECTION A-A

PIN ASSEMBLY

SOCKET ASSEMBLY



MATING PROFILE

NOTES:

1. MATERIALS: COPPER ALLOY  
RETENTION CAP: STAINLESS STEEL
2. PLATING:
  - i. CONTACT AREA: GOLD.
  - ii. REST AREA: SILVER WITH TARNISH INHIBITOR
3. MATES WITH THE STANDARD PIN DRAWINGS:
  - i. 3.4MM SMT DRAWING 2032631134-SD, MIN MATING DISTANCE 5.9MM
  - ii. 3.4MM PRESS FIT DRAWING 2032630034-SD, MIN MATING DISTANCE 6.15MM
4. PRODUCT SPECIFICATION: 2043130018-PS
5. APPLICATION SPECIFICATION: 2043130018-AS
6. PACKAGING SPECIFICATION: 2043130018-PK
7. SILVER COMPONENTS WILL BE SUPPLIED TARNISH FREE  
BUT MAY TARNISH OVER TIME.
8. DATE CODE TO BE LASER MARKED APPROXIMATELY WHERE SHOWN  
USING DDYY FORMAT

THIS DRAWING CONTAINS INFORMATION THAT IS PROPRIETARY TO MOLEX ELECTRONIC TECHNOLOGIES, LLC AND SHOULD NOT BE USED WITHOUT WRITTEN PERMISSION														
DIMENSION UNITS		SCALE		CURRENT REV DESC: NOTE UPDATED				<div>molex</div>						
mm		NTS												
GENERAL TOLERANCES (UNLESS SPECIFIED)				EC NO: 659460 DRWN: PRADEA 2020/12/18 CHK'D: JJONIAK 2021/04/14 APPR: JJONIAK 2021/04/21  INITIAL REVISION: DRWN: JJONIAK 2017/08/04 APPR: BPISZCZOR 2019/05/30				3.4MM CST PRESSFIT W/1.0MM FLOAT						
ANGULAR TOL								PRODUCT CUSTOMER DRAWING						
4 PLACES		±						DOCUMENT NUMBER		DOC TYPE		DOC PART	REVISION	
3 PLACES		±						2043130018-SD		PSD		000	B	
2 PLACES		± 0.15						MATERIAL NUMBER		CUSTOMER		SHEET NUMBER		
1 PLACE		± 0.25		D-SIZE		SERIES		2043130018		GENERAL MARKET				
0 PLACES		±		THIRD ANGLE PROJECTION		DRAWING		204313		1 OF 1				
DRAFT WHERE APPLICABLE MUST REMAIN WITHIN DIMENSIONS				