



## GENESIS POLYCARBONATE ENCLOSURE

### Features and Benefits

- Integra's largest series of polycarbonate enclosure offering
- Light gray in color with high gloss finish
- Featuring Integra's unique "Multi-Max Rail Mounting System®" (an extremely flexible interior mounting system)
- Sturdy, full length piano hinged door
- Extra rigid construction utilizing unique internal Multi-Max frame
- Brass inserts on rear wall of enclosure and on lid for more mounting options
- Integrated mounting flanges eliminate the need to affix to the enclosure
- Available in multiple closure options: non-metallic, quarter turn or three-point latch configurations
- UL/C-UL-50 listed (File # E207562)

The Integra Genesis series represents the beginning of best medium sized non-metallic enclosures available. The unmatched flexibility of the interior of this enclosure combined with off the shelf accessories make the first of the Genesis series enclosures ideal for almost any application.

### Mechanical and Thermal Test Spec. Unit Genesis Line

Instrumented Dart Impact @ 73° F		in/lb.	565
Falling Ball Impact @ 73° F	UL-746	in/lb.	900
Deflection Temperature @ 264 psi	ASTM D648	Deg. F	270
Modulus of Elasticity	m ASTM D790	ksi	340
Temperature Range		Deg. F	-40 to 265

### Flammable / UV Ratings Test Spec. Unit Genesis Line

Flame Rating - UL	UL 94	-	5VA
Outdoor UV Exposure	UL	-	F1

201608 P/N	4X IP66	6P IP68	Hinged Cover	Opaque Cover	Clear Cover	Integrated Mounting Flange	Non-Metallic Locking Latch	Multi-Max Rail System®	3-Point Latch	1/4 Turn Latch
G201608	✓	✓	✓	✓		✓	✓	✓		
G201608C	✓	✓	✓		✓	✓	✓	✓		
G201608TPL	✓		✓	✓		✓		✓	✓	
G201608CTPL	✓		✓		✓	✓		✓	✓	
G201608QTL	✓		✓	✓		✓		✓		✓
G201608CQTL	✓		✓		✓	✓		✓		✓
G201608E	✓	✓	✓	✓		✓	✓			
G201608CE	✓	✓	✓		✓	✓	✓			

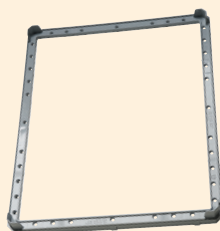
Part numbers containing -E exclude Multi-Max Frame and Multi-Max Rail System®

### G201608 includes the following

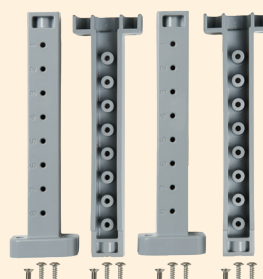
Enclosure, Multi-Max Frame, Set of Four Multi-Max Rails® (with Screws), and Two Latches



Enclosure



Multi-Max Frame  
(pre-installed)



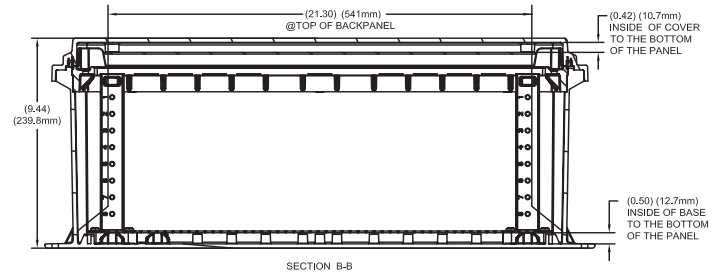
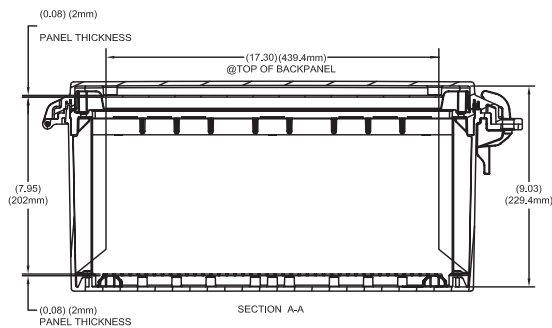
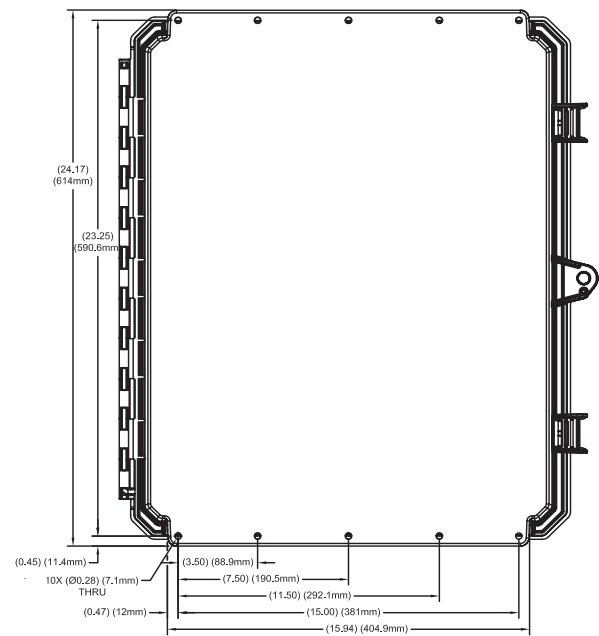
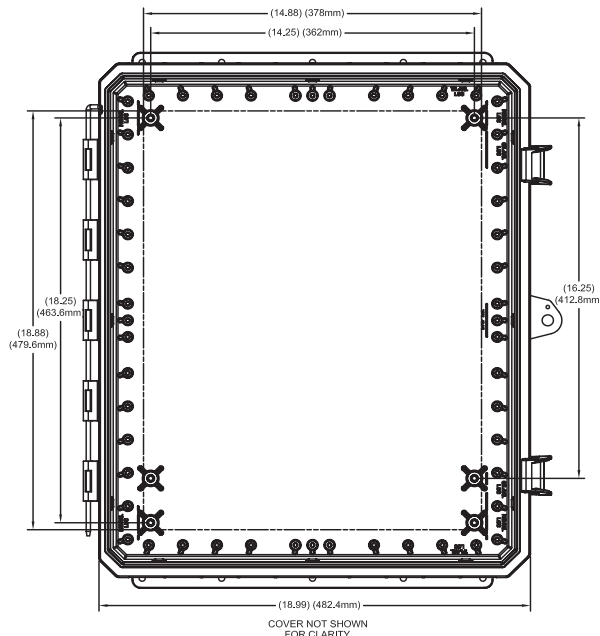
Set of Four  
Multi-Max Rails®



Two Latches

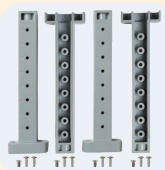


# 20X16X08 GENESIS LINE



Register online to download this drawing off the Integra website at [www.integraenclosures.com](http://www.integraenclosures.com) | Your company's logo or other information on the lid. Consult factory for details.

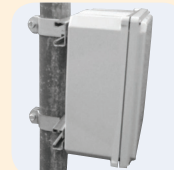
## Accessories for 20x16x08 Genesis (For complete accessories, see pages 82-83)



**Multi-Max Rails®**  
**KIT-GMMR8** - Four  
Multi-Max Rails® with  
screws included



**Panel Pads**  
**KIT-GPP-2016**  
Includes four  
panel pads  
and screws



**Pole Mounting Kits**  
**PMKG-216-GEN** - 2" pole  
**PMKG-316-GEN** - 3" pole  
**PMKG-416-GEN** - 4" pole  
**PMKG-1216-GEN** - 12" pole



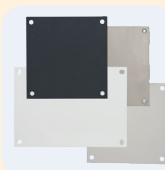
**Door Stop Kit**  
**KIT-DOOR-STOP** - Door  
Stop Kit for Genesis  
Enclosures



**Self-Tapping Screws**  
**GSP-10** - Self-tapping  
screws for bosses (10  
per pack)



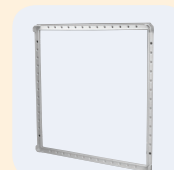
**Swing Out Panel System**  
**ABP2016-GSOPK** - Aluminum  
swing panel includes  
ABP2016 and GSOPK20  
**SBP2016-GSOPK** - Steel  
swing panel includes  
SBP2016 and GSOPK20  
**GSOPK20** - 20" hinge, panel  
pads and screws (panel  
not included)



**Back and Swing Panels**  
**ABP-2016** - Aluminum  
panel  
**SBP-2016** - Steel panel  
**PVCBP-2016** - PVC panel



**Fan Shroud Kits**  
**FS-KIT-1** - One shroud  
with gasket and screws  
**FS-KIT-2** - Two shrouds  
with gasket and screws



**Multi-Max Frame**  
**GSR2016** - Multi-Max  
frame support ring