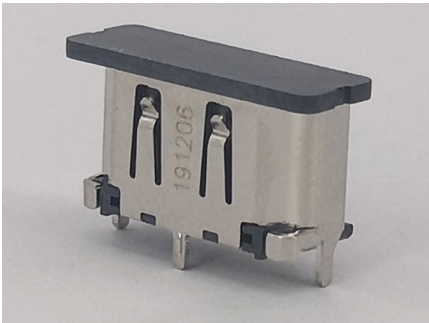




Part Number : [476591102](#)
Product Description : HDMI Receptacle,
Vertical, 8.50mm Mounted Height, Surface
Mount, Gold (Au) Flash Plating, with Cap, 19
Circuits, Tape and Reel, Lead-Free
Series Number : 47659
Status : Active
Product Category : I/O Connectors



Documents & Resources

Drawings

[Drawing 476591102_sd.pdf](#)
[Packaging Design Drawing 476595100-000.pdf](#)

3D Models and Design Files


[3D Model 476591102_stp.zip](#)

Specifications

[Product Specification 2086580001-000.pdf](#)

Product Environment Compliance

Compliance

GADSL/IMDS	Not Relevant
China RoHS	
EU ELV	Not Relevant
Low-Halogen Status	Low-Halogen per IEC 61249-2-21
REACH SVHC	Not Contained per D(2023)8585-DC (23 Jan 2024)
EU RoHS	Compliant per EU 2015/863

Multiple Part Product Compliance Statements

- Eu RoHS
- REACH SVHC
- Low-Halogen

Multiple Part Industry Compliance Documents

- IPC 1752A Class C
- IPC 1752A Class D

- Molex Product Compliance Declaration
- IEC-62474
- chemSHERPA (xml)

EU RoHS Certificate of Compliance

Part Details

General

Status	Active
Category	I/O Connectors
Series	47659
Description	HDMI Receptacle, Vertical, 8.50mm Mounted Height, Surface Mount, Gold (Au) Flash Plating, with Cap, 19 Circuits, Tape and Reel, Lead-Free
Application	Wire-to-Board
Component Type	Receptacle
Product Family	HDMI Connectors
Product Name	HDMI
Standard	HDMI 1.0
Type	A
UPC	193264442690

Electrical

Current - Maximum per Contact	0.5A
Shielded	Yes
Voltage - Maximum	40V DC

Physical

Circuits (Loaded)	19
Circuits (maximum)	19
Color - Resin	Black
Durability (mating cycles max)	10000
Gender	Female
Keying to Mating Part	None
Lock to Mating Part	Yes

Material - Metal	Copper Alloy
Material - Plating Mating	Gold
Material - Plating Termination	Gold
Material - Resin	High Temperature Thermoplastic
Mounting Style	Vertical
Net Weight	1.710/g
Number of Rows	2
Orientation	Vertical
Packaging Type	Embossed Tape on Reel
Panel Mount	Without Flange
PCB Locator	Yes
PCB Retention	Yes
Pitch - Mating Interface	0.50mm
Pitch - Termination Interface	0.50mm
Plating min - Mating	0.051µm
Plating min - Termination	0.051µm
Polarized to Mating Part	Yes
Polarized to PCB	Yes
Ports	1
Temperature Range - Operating	-20° to +85°C
Termination Interface Style	Surface Mount