

SPECIFICATIONS:

ELECTRICAL:

| | |
|----------------------------|-----------------------|
| INSULATOR RESISTANCE: | 5 G OHMS Min. |
| DIELECTRIC WITHSTANDING: | 1,000VAC r.m.s. |
| OPERATING TEMPERATURE: | -55° C ~ +125° C |
| POWER CONTACT RESISTANCE: | 1.0 mOHMS Max. |
| SIGNAL CONTACT RESISTANCE: | 2.7 mOHMS Max. |
| POWER PINS: | SEE PART NUMBER BELOW |
| SIGNAL PINS: | 5 AMPS |

MECHANICAL:

CONTACT INSERTION FORCE: 4.5 Kg Max.
CONTACT SEPARATOR FORCE: 0.3Kg Min.

MATERIALS:

| | |
|------------|---|
| CONTACTS: | COPPER ALLOY |
| INSULATOR: | PBT UL94V-0 RATED, BLK 230°C PROCESS TEMP. |
| SHELL: | STEEL |

FINISH:

SHELL: NICKEL
CONTACTS: FULL GOLD FLASH

680M17W2103LYY1

2 = 20 AMP
4 = 40 AMP

0 = NO HARDWARE
1 = 0.098" CN SOLDER SIDE
2 = 0.236" CN SOLDER SIDE
3 = 0.236" CN MATING SIDE

1 = GOLD FLASH _____
*CONTACT NORCOMP FOR MORE OPTIONS

RoHS COMPLIANT



THESE DRAWINGS AND SPECIFICATIONS ARE THE PROPERTY OF NorComp AND SHALL NOT BE REPRODUCED, COPIED OR USED AS THE BASIS FOR THE MANUFACTURE OR SALE OF APPARATUS WITHOUT WRITTEN PERMISSION.

DRAWN:
M. SIGMON

DATE:
11/13/2012

UNITS = inch [mm]

DO NOT SCALE FROM DRAWING

NorComp

SCALE:
NTS

| | |
|-------|----|
| SHEET | OF |
| 1 | 2 |

REV
4

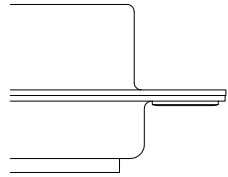
DWG NO.

680M17W2103LYY1

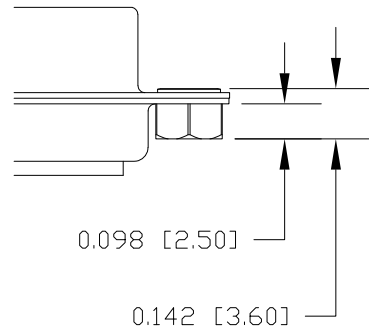
HARDWARE OPTIONS

CLINCH NUTS HAVE #4-40 INTERNAL THREADS THRU

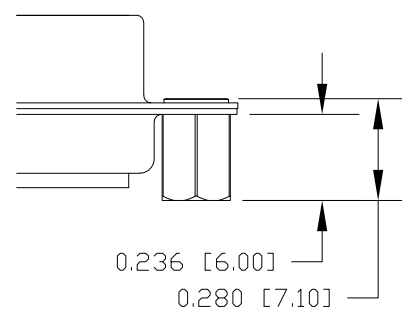
0 NO HARDWARE



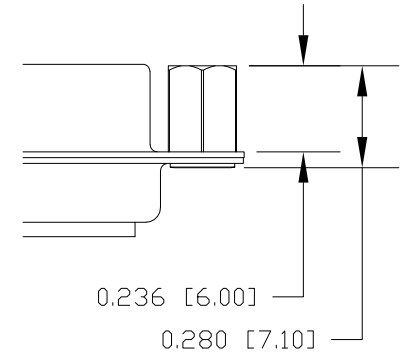
1 0.098" SOLDER SIDE



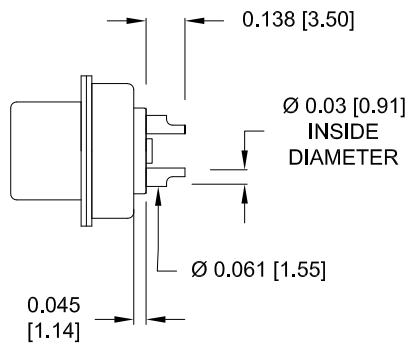
2 0.236" SOLDER SIDE



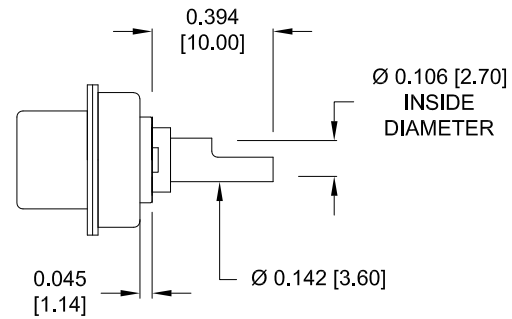
3 0.236" MATING SIDE



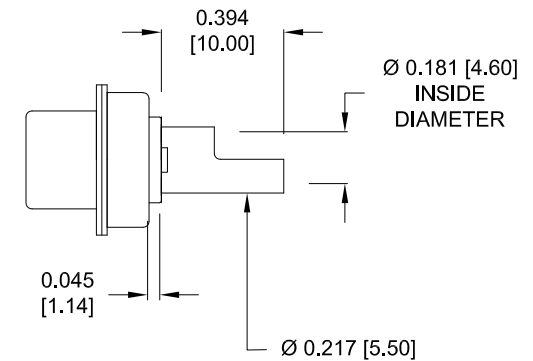
NOTE:
SIGNAL AND POWER CONTACTS
COME PRE-LOADED INTO INSULATORS



SIGNAL CONTACTS
ACCEPTS UP TO 20 AWG WIRE



20 AMP POWER CONTACTS
ACCEPTS UP TO 12 AWG WIRE



40 AMP POWER CONTACTS
ACCEPTS UP TO 8 AWG WIRE

RoHS COMPLIANT

UNITS = inch [mm]

DO NOT SCALE FROM DRAWING



THESE DRAWINGS AND SPECIFICATIONS ARE THE PROPERTY OF NorComp AND SHALL NOT BE REPRODUCED, COPIED OR USED AS THE BASIS FOR THE MANUFACTURE OR SALE OF APPARATUS WITHOUT WRITTEN PERMISSION.

DRAWN:
M. SIGMONDATE:
11/13/2012

NorComp

SCALE:
NTSSHEET OF
2 OF 2REV
4

DWG NO.

680M17W2103LYY1