

## SPECIFICATIONS:

## ELECTRICAL:

|                            |                       |
|----------------------------|-----------------------|
| INSULATOR RESISTANCE:      | 5 G OHMS Min.         |
| DIELECTRIC WITHSTANDING:   | 1,000VAC r.m.s.       |
| OPERATING TEMPERATURE:     | -55° C ~ +125° C      |
| POWER CONTACT RESISTANCE:  | 1.0 mOHMS Max.        |
| SIGNAL CONTACT RESISTANCE: | 2.7 mOHMS Max.        |
| POWER PINS:                | SEE PART NUMBER BELOW |
| SIGNAL PINS:               | 5 AMPS                |

## MECHANICAL:

|                          |             |
|--------------------------|-------------|
| CONTACT INSERTION FORCE: | 4.5 Kg Max. |
| CONTACT SEPARATOR FORCE: | 0.3Kg Min.  |

## MATERIALS:

|            |   |
|------------|---|
| CONTACTS:  | COPPER ALLOY                                  |
| INSULATOR: | PBT UL94V-0 RATED, BLK<br>230°C PROCESS TEMP. |
| SHELL:     | STEEL   |

## FINISH:

|           |                 |
|-----------|-----------------|
| SHELL:    | NICKEL          |
| CONTACTS: | FULL GOLD FLASH |

680M9W4203L YY1

2 = 20 AMP

4 = 40 AMP

0 = NO HARDWARE

1 = 0.098" CN SOLDER SIDE

2 = 0.236" CN SOLDER SIDE

3 = 0.236" CN MATING SIDE

1 = GOLD FLASH

2 = 30u" GOLD

\*CONTACT NORCOMP FOR MORE OPTIONS

RoHS COMPLIANT



THESE DRAWINGS AND SPECIFICATIONS ARE THE PROPERTY OF NorComp AND SHALL NOT BE REPRODUCED, COPIED OR USED AS THE BASIS FOR THE MANUFACTURE OR SALE OF APPARATUS WITHOUT WRITTEN PERMISSION.

DRAWN:

M. SIGMON

DATE:

08/20/2012

UNITS = inch [mm]

DO NOT SCALE FROM DRAWING

NorComp

SCALE:

NTS

SHEET

OF

1

2

REV

4

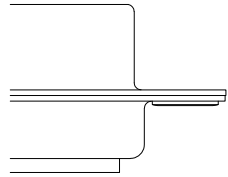
DWG NO.

680M9W4203L YY1

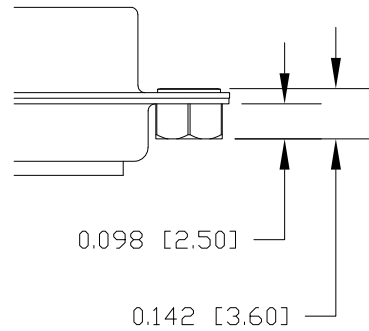
## HARDWARE OPTIONS

### CLINCH NUTS HAVE #4-40 INTERNAL THREADS THRU

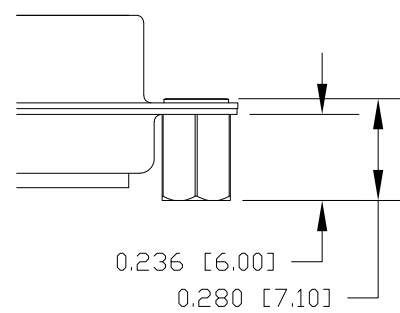
0 ..... NO HARDWARE



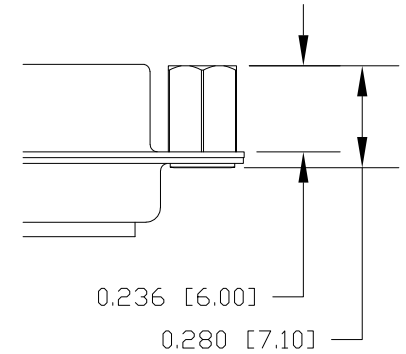
1 ..... 0.098" SOLDER SIDE



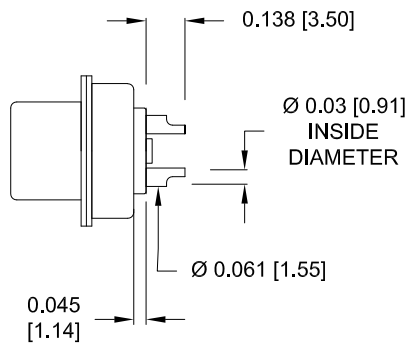
2 ..... 0.236" SOLDER SIDE



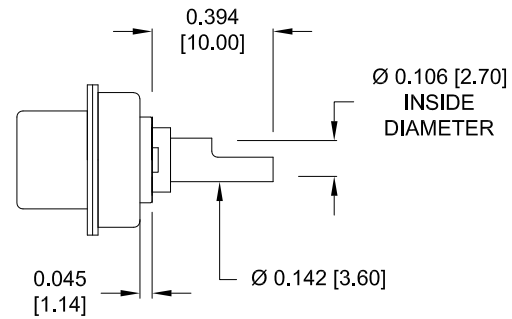
3 ..... 0.236" MATING SIDE



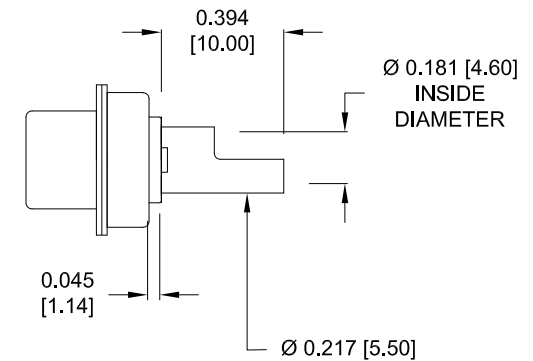
**NOTE:**  
SIGNAL AND POWER CONTACTS  
COME PRE-LOADED INTO INSULATORS



SIGNAL CONTACTS  
ACCEPTS UP TO 20 AWG WIRE



20 AMP POWER CONTACTS  
ACCEPTS UP TO 12 AWG WIRE



40 AMP POWER CONTACTS  
ACCEPTS UP TO 8 AWG WIRE

RoHS COMPLIANT

UNITS = inch [mm]

DO NOT SCALE FROM DRAWING



THESE DRAWINGS AND SPECIFICATIONS ARE THE PROPERTY OF NorComp AND SHALL NOT BE REPRODUCED, COPIED OR USED AS THE BASIS FOR THE MANUFACTURE OR SALE OF APPARATUS WITHOUT WRITTEN PERMISSION.

DRAWN:  
M. SIGMONDATE:  
08/20/2012

NorComp

SCALE:  
NTS

SHEET 2 OF 2

REV  
4

DWG NO.

680M9W4203LYY1