

Han 6EMC/B HTE M25 PFT SL

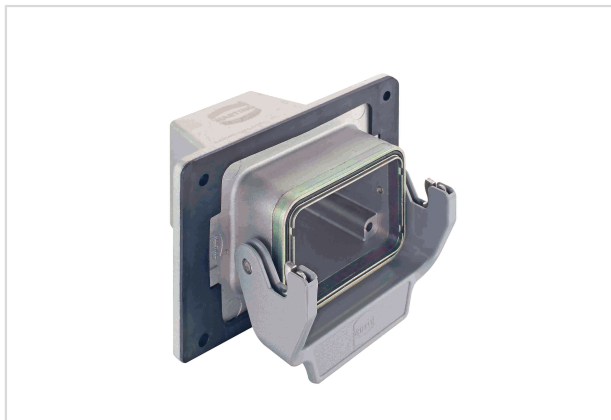


Image is for illustration purposes only. Please refer to product description.

Part number	19 62 806 1121
Specification	Han 6EMC/B HTE M25 PFT SL
HARTING eCatalogue	https://b2b.harting.com/19628061121

Identification

Category	Hoods/Housings
Series of hoods/housings	Han [®] EMC/B
Type of hood/housing	Panel feed through housing
Type	High construction

Version

Size	6 B
Version	Top entry
Cable entry	1x M25
Locking type	Single locking lever
Han-Easy Lock [®]	Yes
Field of application	Hoods/Housings for higher EMC requirements

Technical characteristics

Limiting temperature	-40 ... +125 °C
Degree of protection acc. to IEC 60529	IP65
Type rating acc. to UL 50 / UL 50E	4 12

Material properties

Material (hood/housing)	Aluminium die-cast
Surface (hood/housing)	Uncoated
Colour (hood/housing)	Unpainted



Pushing Performance

Material properties

Material (seal)	NBR
Material (locking)	Polycarbonate (PC) Stainless steel
Colour (locking)	RAL 7037 (dust grey)
Material flammability class acc. to UL 94 (locking levers)	V-0
RoHS	compliant
ELV status	compliant
China RoHS	e
REACH Annex XVII substances	Not contained
REACH ANNEX XIV substances	Not contained
REACH SVHC substances	Yes
REACH SVHC substances	Potassium 1,1,2,2,3,3,4,4,4-nonafluorobutane-1-sulphonate
California Proposition 65 substances	Yes
California Proposition 65 substances	Lead

Specifications and approvals

Approvals	DNV GL
CE	Yes

Commercial data

Packaging size	1
Net weight	263.7 g
Country of origin	China
European customs tariff number	85389099
eCl@ss	27440202 Shell for industrial connectors