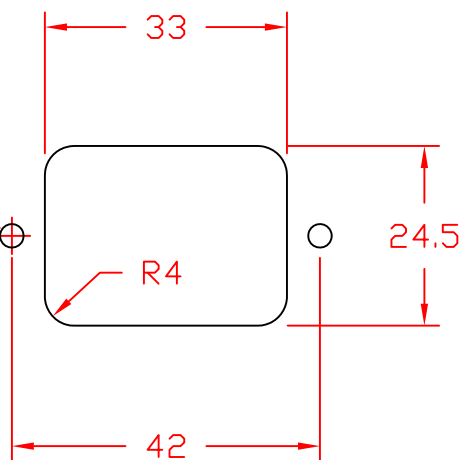
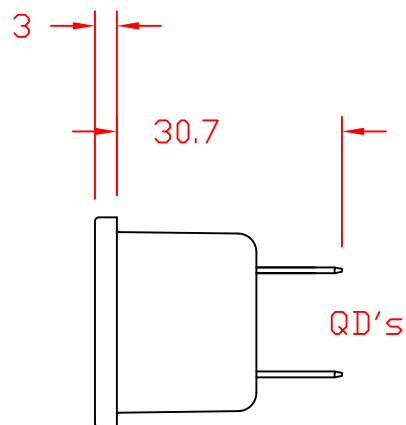


Ø3.2(x2)[See Note 1]



Cut Out



Note 1: Recommended diameter for thru-hole (screw/nut combination) hardware mounting method. Other methods will require holes with different dimensions and parameters.

THIS DOCUMENT AND ITS CONTENTS ARE THE PROPRIETARY CONFIDENTIAL PROPERTY OF INTERPOWER CORPORATION. NO USE OR COPIES MAY BE MADE WITHOUT WRITTEN PERMISSION FROM INTERPOWER CORPORATION.

DIMENSIONS IN MILLIMETERS

TITLE IEC 60320 C20

DRAFT BY: KMA

DATE: 8-22-02

DRAFTING APPROVAL: DDF

DATE: 8-23-02

PART NUMBER:

83030400

MATERIAL: PBT

DO NOT SCALE

INTERPOWER CORPORATION

SHEET 1 OF 1

REV

Added dimensions to screw holes and added Note 1.

09/15/11

CHANGE DESCRIPTION

DATE