

Han 10HvE-gg-M32

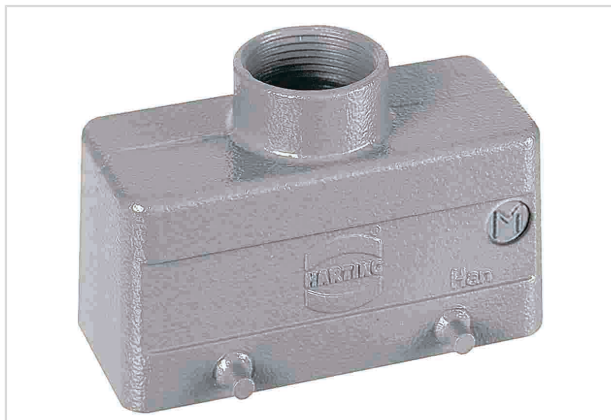


Image is for illustration purposes only. Please refer to product description.

Part number	19 34 010 0422
Specification	Han 10HvE-gg-M32
HARTING eCatalogue	https://b2b.harting.com/19340100422

Identification

Category	Hoods/Housings
Series of hoods/housings	Han Hv E®
Type of hood/housing	Hood
Type	Low construction

Version

Size	24 B
Version	Top entry
Cable entry	1x M32
Locking type	Double locking lever
Field of application	Special hoods/housings for Han Hv E® screw terminal

Technical characteristics

Limiting temperature	-40 ... +125 °C
Degree of protection acc. to IEC 60529	IP65
Type rating acc. to UL 50 / UL 50E	4 4X 12

Material properties

Material (hood/housing)	Aluminium die-cast
Surface (hood/housing)	Powder-coated
Colour (hood/housing)	RAL 7037 (dust grey)
RoHS	compliant



Pushing Performance

Material properties

ELV status	compliant
China RoHS	e
REACH Annex XVII substances	Not contained
REACH ANNEX XIV substances	Not contained
REACH SVHC substances	Not contained
California Proposition 65 substances	Yes

Specifications and approvals

Approvals	DNV GL
CE	Yes

Commercial data

Packaging size	1
Net weight	211.9 g
Country of origin	Germany
European customs tariff number	85389099
eCl@ss	27440202 Shell for industrial connectors