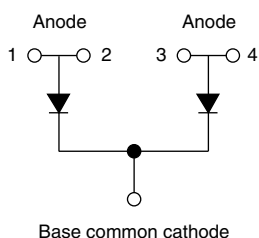


## Not Insulated SOT-227 Power Module Ultrafast Rectifier, 310 A


**SOT-227**


### FEATURES

- Not insulated package
- Ultrafast reverse recovery
- Ultrasoft reverse recovery current shape
- Optimized for power conversion: welding and industrial SMPS applications
- Plug-in compatible with other SOT-227 packages
- Easy to assemble
- Direct mounting to heatsink
- Designed and qualified for industrial level
- Material categorization: for definitions of compliance please see [www.vishay.com/doc?99912](http://www.vishay.com/doc?99912)


**RoHS**  
COMPLIANT

### DESCRIPTION / APPLICATIONS

The VS-UFB310CB40 not insulated modules integrate two state of the art ultrafast recovery rectifiers in the compact, industry standard SOT-227 package. The planar structure of the diodes, and the platinum doping life time control, provide a ultrasoft recovery current shape, together with the best overall performance, ruggedness and reliability characteristics.

These devices are thus intended for high frequency applications in which the switching energy is designed not to be predominant portion of the total energy, such as in the output rectification stage of welding machines, SMPS, DC/DC converters. Their extremely optimized stored charge and low recovery current reduce both over dissipation in the switching elements (and snubbers) and EMI/RFI.

### PRIMARY CHARACTERISTICS

$V_R$	400 V
$I_{F(AV)}$ at $T_C = 119\text{ }^\circ\text{C}$ per module <sup>(1)</sup>	310 A
$t_{rr}$	39 ns
at $T_C$	135 $^\circ\text{C}$
Type	Modules - diode, FRED Pt®
Package	SOT-227

**Note**
<sup>(1)</sup> All 4 anode terminals connected

### ABSOLUTE MAXIMUM RATINGS

PARAMETER	SYMBOL	TEST CONDITIONS	MAX.	UNITS
Cathode to anode voltage	$V_R$		400	V
Continuous forward current per diode	$I_F$	$T_C = 135\text{ }^\circ\text{C}$	155	A
Single pulse forward current per diode	$I_{FSM}$ <sup>(1)</sup>	$T_C = 25\text{ }^\circ\text{C}$	1300	
Maximum power dissipation per module	$P_D$	$T_C = 135\text{ }^\circ\text{C}$	421	W
Operating junction and storage temperatures	$T_J, T_{Stg}$		-55 to +175	$^\circ\text{C}$

**Note**
<sup>(1)</sup> 10 ms sine or 6 ms rectangular pulse


**ELECTRICAL SPECIFICATIONS PER DIODE** ( $T_J = 25\text{ }^{\circ}\text{C}$  unless otherwise specified)

PARAMETER	SYMBOL	TEST CONDITIONS	MIN.	TYP.	MAX.	UNITS
Cathode to anode breakdown voltage	$V_{BR}$	$I_R = 100\text{ }\mu\text{A}$	400	-	-	V
Forward voltage, per leg	$V_{FM}$	$I_F = 100\text{ A}$	-	1.11	1.34	
		$I_F = 100\text{ A}, T_J = 125\text{ }^{\circ}\text{C}$	-	0.99	1.1	
		$I_F = 100\text{ A}, T_J = 175\text{ }^{\circ}\text{C}$	-	0.97	-	
		$I_F = 200\text{ A}$	-	1.3	1.6	
		$I_F = 200\text{ A}, T_J = 125\text{ }^{\circ}\text{C}$	-	1.22	1.4	
		$I_F = 200\text{ A}, T_J = 175\text{ }^{\circ}\text{C}$	-	1.25	-	
Reverse leakage current, per leg	$I_{RM}$	$V_R = V_R\text{ rated}$	-	1.3	50	$\mu\text{A}$
		$V_R = V_R\text{ rated}, T_J = 125\text{ }^{\circ}\text{C}$	-	100	-	mA
		$V_R = V_R\text{ rated}, T_J = 175\text{ }^{\circ}\text{C}$	-	1	4	
Junction capacitance, per leg	$C_T$	$V_R = 400\text{ V}$	-	100	-	pF

**DYNAMIC RECOVERY CHARACTERISTICS PER DIODE** ( $T_J = 25\text{ }^{\circ}\text{C}$  unless otherwise specified)

PARAMETER	SYMBOL	TEST CONDITIONS	MIN.	TYP.	MAX.	UNITS
Reverse recovery time, per leg	$t_{rr}$	$I_F = 1.0\text{ A}, dI_F/dt = 400\text{ A}/\mu\text{s}, V_R = 30\text{ V}$	-	39	-	ns
		$T_J = 25\text{ }^{\circ}\text{C}$	-	89	-	
		$T_J = 125\text{ }^{\circ}\text{C}$	-	184	-	
Peak recovery current, per leg	$I_{RRM}$	$T_J = 25\text{ }^{\circ}\text{C}$	-	9	-	A
		$T_J = 125\text{ }^{\circ}\text{C}$	-	20	-	
Reverse recovery charge, per leg	$Q_{rr}$	$T_J = 25\text{ }^{\circ}\text{C}$	-	400	-	nC
		$T_J = 125\text{ }^{\circ}\text{C}$	-	1840	-	

**THERMAL - MECHANICAL SPECIFICATIONS**

PARAMETER	SYMBOL	TEST CONDITIONS	MIN.	TYP.	MAX.	UNITS
Junction and storage temperature range	$T_J, T_{Stg}$		-55	-	175	$^{\circ}\text{C}$
Junction to case, single leg conducting	$R_{thJC}$		-	-	0.19	$^{\circ}\text{C}/\text{W}$
Junction to case, both leg conducting			-	-	0.095	
Case to heatsink	$R_{thCS}$	Flat, greased surface	-	0.07	-	
Weight			-	30	-	g
Mounting torque		Torque to terminal	-	-	1.1 (9.7)	Nm (lbf.in)
		Torque to heatsink	-	-	1.8 (15.9)	Nm (lbf.in)
Case style			SOT-227 not insulated			

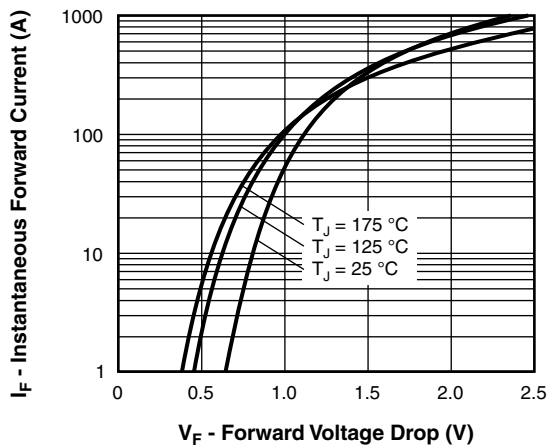


Fig. 1 - Typical Forward Voltage Drop Characteristics, Per Leg

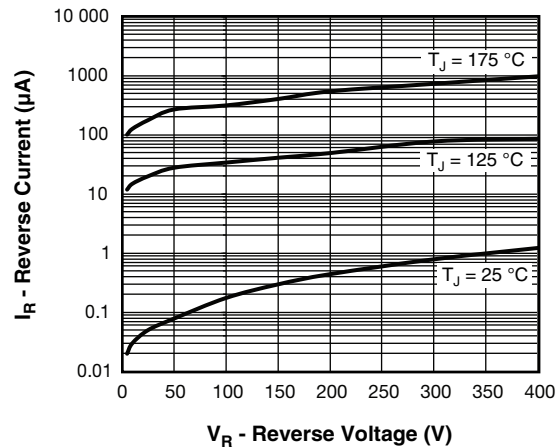


Fig. 2 - Typical Values of Reverse Current vs. Reverse Voltage, Per Leg

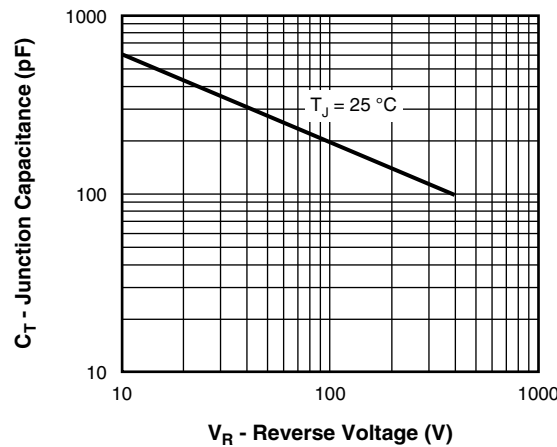


Fig. 3 - Typical Junction Capacitance vs. Reverse Voltage, Per Leg

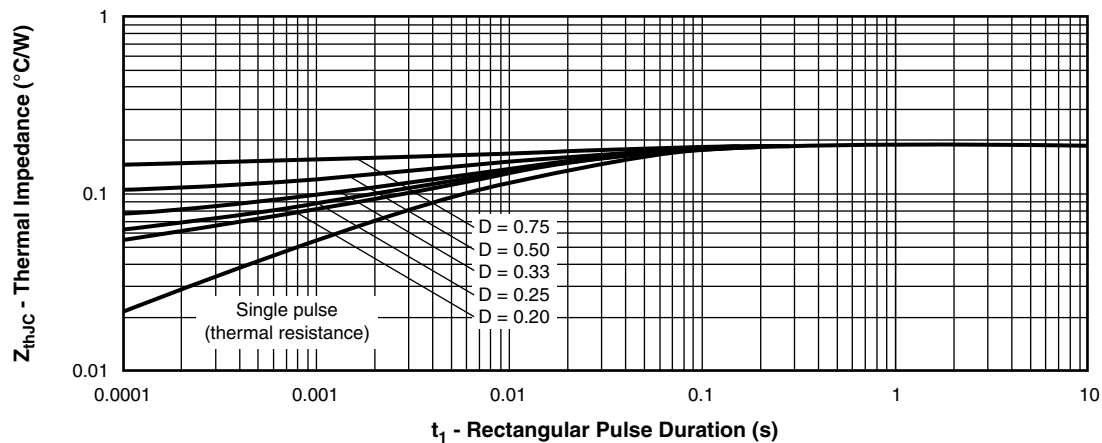


Fig. 4 - Maximum Thermal Impedance  $Z_{thJC}$  Characteristics, Per Leg

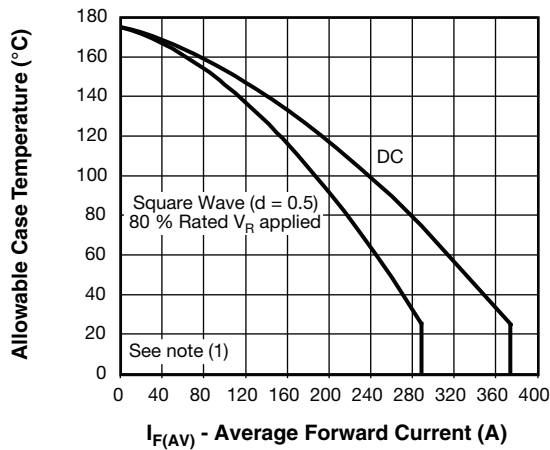


Fig. 5 - Maximum Allowable Case Temperature vs. Average Forward Current, Per Leg

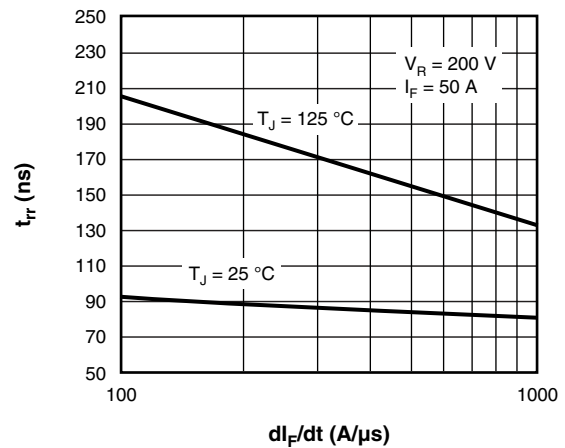


Fig. 7 - Typical Reverse Recovery Time vs.  $dI_F/dt$ , Per Leg

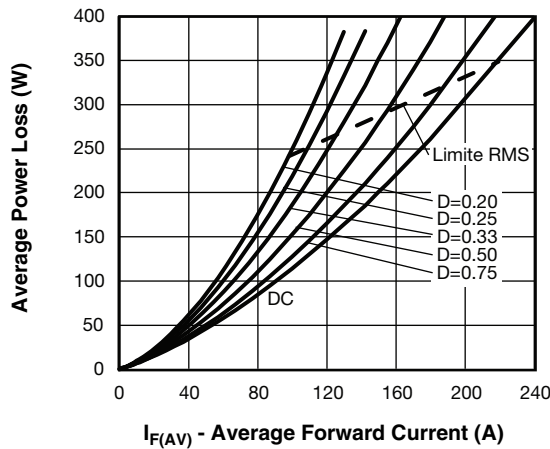


Fig. 6 - Forward Power Loss Characteristics, Per Leg

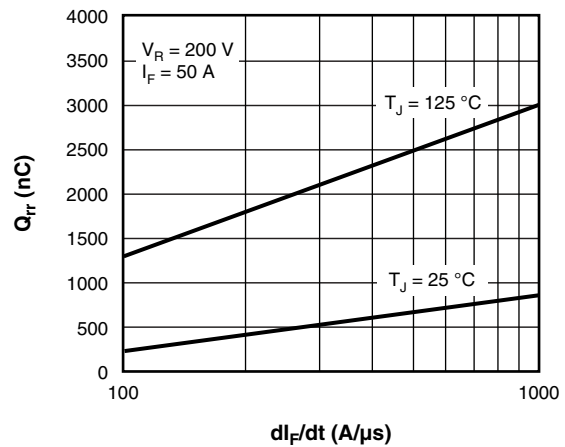


Fig. 8 - Typical Reverse Recovery Charge vs.  $dI_F/dt$ , Per Leg

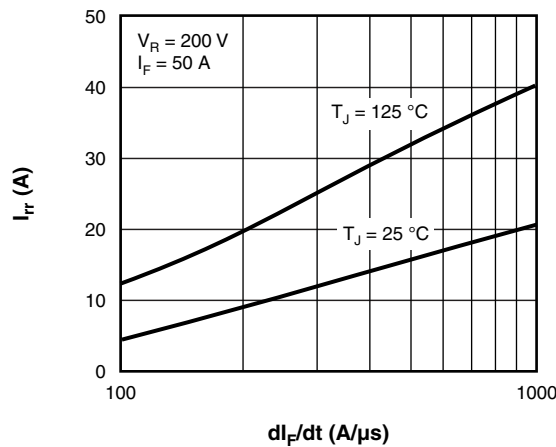


Fig. 9 - Typical Reverse Recovery Current vs.  $dI_F/dt$ , Per Leg

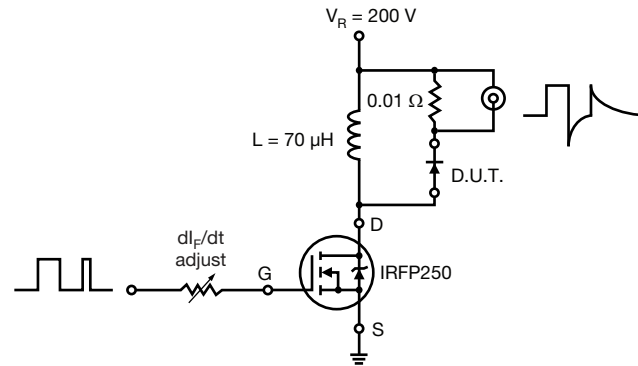


Fig. 10 - Reverse Recovery Parameter Test Circuit

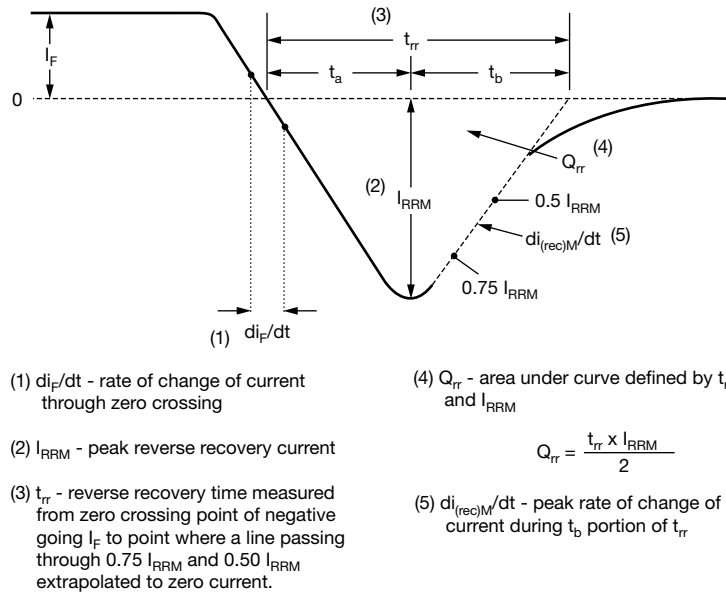


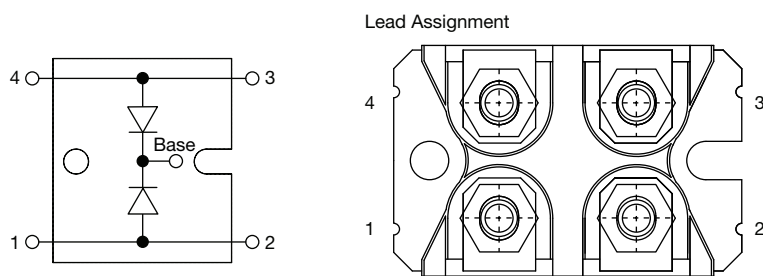
Fig. 11 - Reverse Recovery Waveform and Definitions

**ORDERING INFORMATION TABLE**

Device code	VS-	UF	B	310	C	B	40
	1	2	3	4	5	6	7

- |          |   |  |
|----------|---|--|
| <b>1</b> | - | Vishay Semiconductors product                      |
| <b>2</b> | - | Ultrafast rectifier                                |
| <b>3</b> | - | Ultrafast Pt diffused                              |
| <b>4</b> | - | Current rating (310 = 310 A)                       |
| <b>5</b> | - | Circuit configuration (two diodes common cathode ) |
| <b>6</b> | - | Package indicator (SOT-227 standard not insulated) |
| <b>7</b> | - | Voltage rating (40 = 400 V)                        |

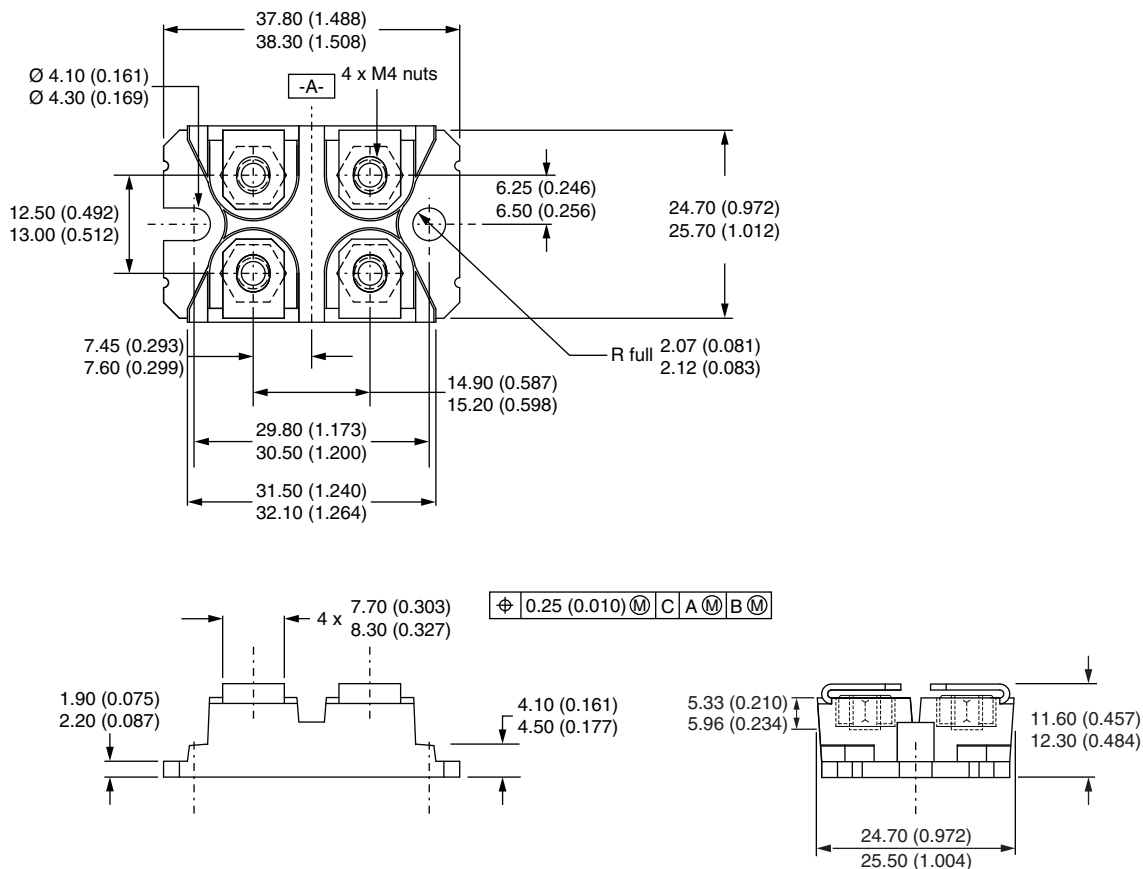
Quantity per tube is 10 pcs, M4 screw and washer included

CIRCUIT CONFIGURATION		
CIRCUIT	CIRCUIT CONFIGURATION CODE	CIRCUIT DRAWING
Two diodes common cathode	C	

LINKS TO RELATED DOCUMENTS	
Dimensions	<a href="http://www.vishay.com/doc?95423">www.vishay.com/doc?95423</a>
Packaging Information	<a href="http://www.vishay.com/doc?95425">www.vishay.com/doc?95425</a>

## SOT-227 Generation 2

**DIMENSIONS** in millimeters (inches)



### Note

- Controlling dimension: millimeter



## Disclaimer

ALL PRODUCT, PRODUCT SPECIFICATIONS AND DATA ARE SUBJECT TO CHANGE WITHOUT NOTICE TO IMPROVE RELIABILITY, FUNCTION OR DESIGN OR OTHERWISE.

Vishay Intertechnology, Inc., its affiliates, agents, and employees, and all persons acting on its or their behalf (collectively, "Vishay"), disclaim any and all liability for any errors, inaccuracies or incompleteness contained in any datasheet or in any other disclosure relating to any product.

Vishay makes no warranty, representation or guarantee regarding the suitability of the products for any particular purpose or the continuing production of any product. To the maximum extent permitted by applicable law, Vishay disclaims (i) any and all liability arising out of the application or use of any product, (ii) any and all liability, including without limitation special, consequential or incidental damages, and (iii) any and all implied warranties, including warranties of fitness for particular purpose, non-infringement and merchantability.

Statements regarding the suitability of products for certain types of applications are based on Vishay's knowledge of typical requirements that are often placed on Vishay products in generic applications. Such statements are not binding statements about the suitability of products for a particular application. It is the customer's responsibility to validate that a particular product with the properties described in the product specification is suitable for use in a particular application. Parameters provided in datasheets and / or specifications may vary in different applications and performance may vary over time. All operating parameters, including typical parameters, must be validated for each customer application by the customer's technical experts. Product specifications do not expand or otherwise modify Vishay's terms and conditions of purchase, including but not limited to the warranty expressed therein.

Hyperlinks included in this datasheet may direct users to third-party websites. These links are provided as a convenience and for informational purposes only. Inclusion of these hyperlinks does not constitute an endorsement or an approval by Vishay of any of the products, services or opinions of the corporation, organization or individual associated with the third-party website. Vishay disclaims any and all liability and bears no responsibility for the accuracy, legality or content of the third-party website or for that of subsequent links.

Except as expressly indicated in writing, Vishay products are not designed for use in medical, life-saving, or life-sustaining applications or for any other application in which the failure of the Vishay product could result in personal injury or death. Customers using or selling Vishay products not expressly indicated for use in such applications do so at their own risk. Please contact authorized Vishay personnel to obtain written terms and conditions regarding products designed for such applications.

No license, express or implied, by estoppel or otherwise, to any intellectual property rights is granted by this document or by any conduct of Vishay. Product names and markings noted herein may be trademarks of their respective owners.