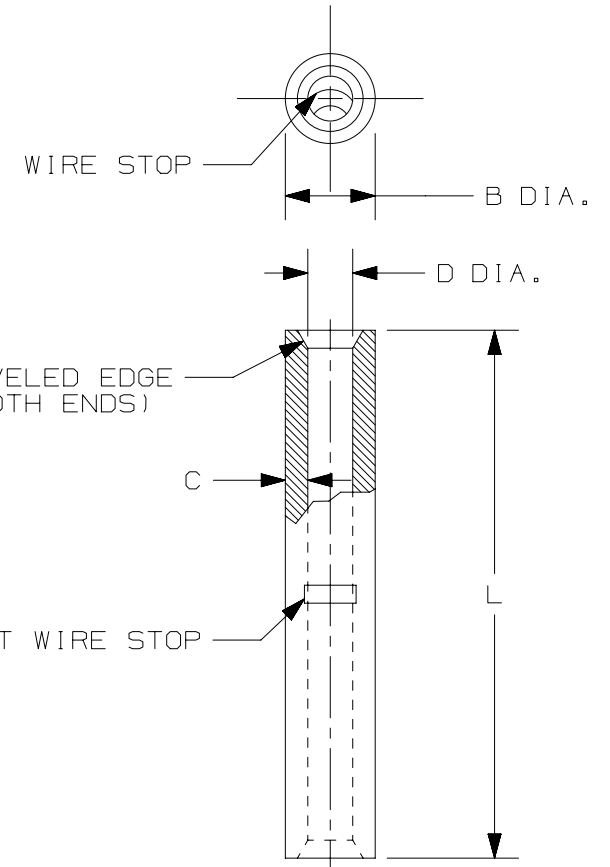


THIS COPY IS PROVIDED ON A RESTRICTED BASIS AND IS NOT TO BE USED IN ANY WAY DETRIMENTAL TO THE INTERESTS OF PANDUIT CORP.

PANDUIT PART #	WIRE RANGE AWG [mm ²]	DIMENSIONS in. [mm]			
		L ± .03 [0,76]	B DIA. ± .01 [0,25]	C ± .03 [0,76]	D DIA. ± .01 [0,25]
BS22	#26-22 [0,25-0,5]	.47 [11,9]	.08 [2,0]	.02 [0,5]	.04 [1,0]

NOTES:

- USED FOR:
 - #26-22 [0,25-0,5mm²] SOLID OR STRANDED COPPER WIRE
 - 302°F [150°C] MAX. TEMPERATURE RATING
- INSTALLATION TOOLS:
 - PANDUIT APPROVED:
CT-100A, CT-200, CT-160, CT-260
- WIRE STRIP LENGTH: 9/32 ^{+1/32} [7,1 ^{+0,8}]
- MATERIAL:
 - STAMPING: .02 [0,5] COPPER, TIN PLATED
- SEE www.panduit.com FOR PACKAGE QUANTITIES INDICATED BY PART NUMBER SUFFIX
- DIMENSIONS IN BRACKETS ARE METRIC EQUIVALENT



REV	DATE	BY	CHK	APR	DESCRIPTION	ECN
08	10.08.19	JHNU	RGB	RGB	REVISED DIMENSION NAME IN TABLE: D DIA WAS B DIA	N41336BA-A41336
07	10.20.14	JHNU	JHNU	RGB	REMOVED UL & CSA FROM NOTE 2	N41336BA-A41336
06	09.06.12	JBN	LCA	VMB	REVISED NOTES. ADDED METRIC EQUIVALENTS. UPDATED DRAWING TO CURRENT STANDARD.	A41336

TITLE		BUTT SPLICE, NON- INSULATED #26-22		
		CUSTOMER DRAWING		
ITEM REVISION NAME		N41336BA/08		
DATASET FILE NAME		N41336BA_DC/08A		
		PANDUIT		
		MATERIAL: SEE NOTES		
		DRAWING NUMBER: A41336		
UNLESS OTHERWISE SPECIFIED, DIMENSIONAL TOLERANCES ARE: IN [mm]				
.x ± .1 [2.54]	.xxx ± .005 [.13]			
.xx ± .01 [.25]	ANGLES ± 5°			
		THIRD ANGLE PROJECTION		
DRAWN BY	DATE	CHK	SCALE	SIZE
DAW	-	-	N.T.S	A
			SHT 1 OF 1	

D101000DA/15