

1

2

3

4

5

6

7

A

A

B

B

C

C

D

D

E

E

F

F

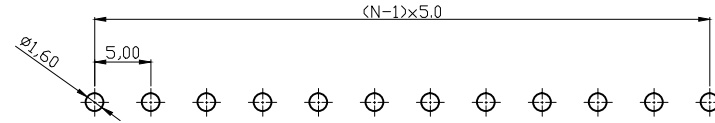
G

G

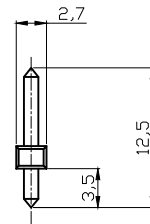
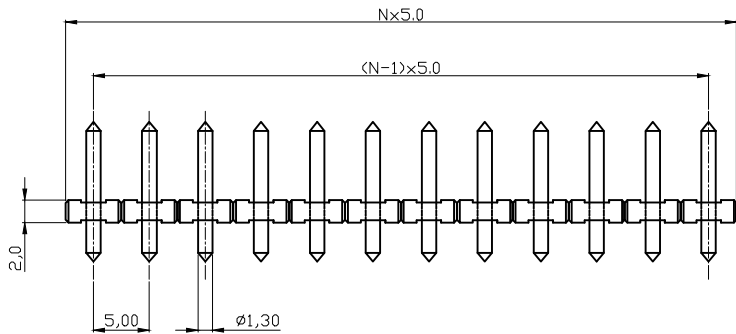
H

H

P.C.B. LAYOUT



N = Number of contact



Material:
 Solid PIN: Brass(CuZn)
 Surface of solder tail: Tin plated
 Insulator(housing): Thermoplastic (UL94V-0)

Electrical:	UL	CSA	VDE	TUV
Voltage rating:	300V	300V	300V	300V
Current rating:	10A	10A	12A	15A
Withstanding Voltage:	1.6KV	1.6KV	2.5KV	2.5KV
Operating temperature:	-40°C to +115°C			
Soldering temperature:	250°C±10°C/5 Sec			
Safety Approval:				

RoHS compliant

Unit: mm



File No.: E349947

Scale	1:1					Date	Name	Customer-No.
TOLERANCE						Drawn	07.12.2006	Hellwig
X.	±0.50							
X.X	±0.30	④	Add UL	18.04.2016	Joanna	Approved	18.04.2016	Joanna
X.XX	±0.10	③	Update	29.07.2009	Dean			
DIM	TOL	②	Update technical date	28.07.2008	N.Schulz			
X.°	±1°							
X.X°	±X°	①	Drawn	07.12.2006	Hellwig			
Angle	TOL	Id.	Modification	Date	Name			

Customer-No.	
ASSMANN WSW-No. A-TB500-OPxx	
Drawing-No.	rev04
ASS 1157 CO	Sheet
Replace	

1

2

3

4

5

6

7