



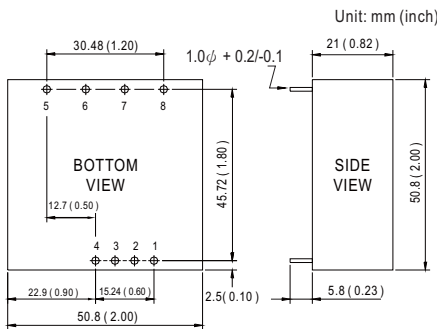
- Features :
  - 2:1 wide input range
  - 4:1 wide input range(option)
  - 1000VDC I/O isolation
  - Built-in EMI filter
  - Trimming output(±10%)
  - Remote ON-OFF control
  - Protections: Short circuit / Overload
  - Cooling by free air convection
  - Six-sided shield metal case
  - Epoxy encapsulated
  - 100% burn-in test
  - Approvals: FCC / EAC / CE / UKCA
  - 2 years warranty



**SPECIFICATION**

ORDER NO.	DKA30A-05	DKA30B-05	DKA30C-05	DKA30A-12	DKA30B-12	DKA30C-12	DKA30A-15	DKA30B-15	DKA30C-15
OUTPUT	DC VOLTAGE			±12V			±15V		
	CURRENT RANGE			±125 ~ ±1250mA			±100 ~ ±1000mA		
	RATED POWER			30W			30W		
	RIPPLE & NOISE (max.) Note.2			100mVp-p					
	LINE REGULATION Note.3			±0.5%					
	LOAD REGULATION Note.4			±0.5%					
	VOLTAGE ACCURACY			±2.0%					
	SWITCHING FREQUENCY			100KHz min.					
	EXTERNAL TRIM Adj. RANGE			±10%					
INPUT	VOLTAGE RANGE								
	EFFICIENCY (Typ.)								
	DC CURRENT								
	FILTER								
	PROTECTION								
PROTECTION (Note. 5)	OVERLOAD								
	SHORT CIRCUIT								
ENVIRONMENT	WORKING TEMP.								
	WORKING HUMIDITY								
	STORAGE TEMP., HUMIDITY								
	TEMP. COEFFICIENT								
	VIBRATION								
SAFETY & EMC	SAFETY STANDARDS								
	WITHSTAND VOLTAGE								
	ISOLATION RESISTANCE								
	EMC EMISSION								
	EMC IMMUNITY								
OTHERS	REMOTE CONTROL								
	MTBF								
	DIMENSION								
	WEIGHT								

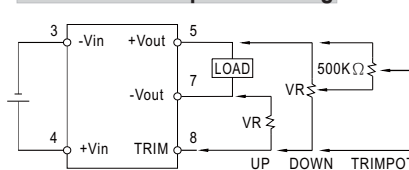
■ Mechanical Specification



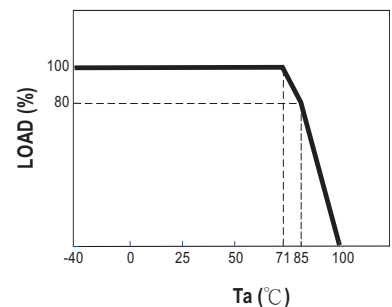
■ Pin Configuration

Pin No.	Output	Pin No.	Output
1	R.C	5	+Vout
2	No Pin	6	COM
3	-Vin	7	-Vout
4	+Vin	8	TRIM

■ External Output Trimming



■ Derating Curve



**NOTE**

- All parameters are specified at normal input, rated load, 25°C 70% RH ambient.
  - Ripple & noise are measured at 20MHz by using a 12" twisted pair terminated with a 0.1uf & 47uf capacitor.
  - Line regulation is measured from low line to high line at rated load.
  - Load regulation is measured from 10% to 100% rated load.
  - Please prevent the converter from operating in overload or short circuit condition for more than 30 seconds.
- ※ Product Liability Disclaimer : For detailed information, please refer to <https://www.meanwell.com/serviceDisclaimer.aspx>